

T7 Release 14.1

Enhanced Trading Interface (ETI)

Manual

Version 2

ETI Version: 14.1

Version: 2

Date: 18 Mar 2026

Enhanced Trading Interface (ETI)

Manual – Version 2

18. Mar. 2026

ETI Version 14.1

Page 2 of 77

Disclaimer**© Deutsche Börse Group 2026**

This content is for informational purposes only. None of the information constitutes investment advice or an offer to sell or the solicitation of an offer to buy any contract, share or other financial instrument. This content is only for use as general information and all descriptions, examples and calculations contained are for illustrative purposes only.

Deutsche Börse AG, Frankfurter Wertpapierbörse (FWB®, the Frankfurt Stock Exchange), Eurex Frankfurt AG, Eurex Deutschland and Eurex Clearing AG do not represent that the information in this publication is comprehensive, complete or accurate and exclude liability for any consequence resulting from acting upon the contents of this or another publication, in so far as no willful violation of obligations took place or, as the case may be, no injury to life, health or body arises or claims resulting from the Product Liability Act are affected.

Securities traded on the Frankfurt Stock Exchange and Eurex derivatives (other than EURO STOXX 50® Index Futures contracts, EURO STOXX® Select Dividend 30 Index Futures contracts, STOXX® Europe 50 Index Futures contracts, STOXX® Europe 600 Index Futures contracts, STOXX® Europe Large/Mid/Small 200 Index Futures contracts, EURO STOXX® Banks Sector Futures contracts, STOXX® Europe 600 Banks/Industrial Goods & Services/Insurance/Media/Personal & Household Goods/Travel & Leisure/Utilities Futures contracts, DAX® Futures contracts, MDAX® Futures contracts, TecDAX® Futures contracts, SMIM® Futures contracts, SLI Swiss Leader Index® Futures contracts, Eurex inflation/commodity/weather/property and interest rate derivatives) are currently not available for offer, sale or trading in the United States nor may they be offered, sold or traded by persons to whom US tax laws apply.

The fund shares listed in XTF Exchange Traded Funds® are admitted for trading on the Frankfurt Stock Exchange. Users of this information service who legally reside outside Germany are herewith advised that sale of the fund shares listed in XTF Exchange Traded Funds may not be permitted in their country of residence. The user makes use of the information at their own risk.

Legal validity of this disclaimer

In the event that individual parts of or formulations contained in this text are not, or are no longer, legally valid (either in whole or in part), the content and validity of the remaining parts of the document are not affected.

Trademarks

The names and designations listed under www.deutsche-boerse.com/disclaimer are registered trademarks of Deutsche Börse AG or an affiliate of Deutsche Börse Group.

The names and trademarks listed there do not represent a complete list and, as well as all other trademarks and protected rights mentioned in this publication, are subject unreservedly to the applicable trademark law in each case and are not permitted to be used without the express permission of the registered owner. The simple fact that this publication mentions them does not imply that trademarks are not protected by the rights of third parties.

Information on trademarks of Stoxx Ltd. and ISS STOXX Index GmbH are available under www.stoxx.com/trademarks.

EEX® is a registered trademark of European Energy Exchange AG.

TRADEGATE® is a registered trademark of Tradegate AG Wertpapierhandelsbank.

Flexible is better.® is a registered trademark of Axioma, Inc.

Enhanced Trading Interface (ETI)

Contents

1.	List of Abbreviations.....	6
2.	Introduction.....	8
2.1	Purpose.....	9
2.2	Related Documents.....	9
2.2.1	ETI Message References.....	9
2.2.2	Release Notes.....	9
2.2.3	Functional and Interface Overview.....	9
2.2.4	Cross System Traceability.....	9
2.2.5	Functional Reference.....	10
2.2.6	Network Access Guide.....	10
3.	Technical Overview.....	11
3.1	Message Based.....	11
3.2	Low Footprint.....	11
3.3	Standard.....	11
3.4	Session Oriented.....	11
3.5	Backward Compatibility.....	12
3.6	Subscription Mechanism.....	12
3.7	Full Control in Case of a Failover.....	12
3.8	Architecture Throttle.....	13
3.9	Session Login and User Login Throttle.....	13
4.	Service Description.....	14
4.1	FIX Semantics.....	14
4.2	Party Identification.....	14
4.3	Security Identification.....	17
4.4	Creation of a Strategy (derivatives markets only).....	18
4.5	Creation of a Flexible Simple Instrument (derivatives markets only).....	19
4.6	Order Identifiers.....	19
4.6.1	Client Order ID.....	19
4.6.2	Exchange Order ID.....	20
4.7	Order Handling.....	20
4.7.1	Order Types.....	20
4.7.2	Cancellation.....	24
4.7.3	Modification.....	24
4.7.4	Total Order Quantity Modification.....	26
4.7.5	Self-Match-Prevention (prevention of cross matches).....	26
4.7.6	Quote Deletion due to Passive Liquidity Protection and Pending Cancellation Executed.....	26
4.7.7	Order Mass Cancellation.....	27

Enhanced Trading Interface (ETI)

Manual – Version 2

18. Mar. 2026

ETI Version 14.1

Page 4 of 77

4.7.8	Account Structure.....	27
4.7.9	Short Order Message Layouts.....	28
4.7.10	Order Status and Execution Reports.....	29
4.7.11	Order Book Restatement.....	37
4.7.12	Deprecated Order Management Requests.....	38
4.8	Quote Handling.....	38
4.8.1	Quote Characteristics.....	38
4.8.2	Maintaining Quotes.....	39
4.8.3	Quote Activation/Inactivation.....	41
4.8.4	Market Maker Protection - derivatives markets only.....	41
4.9	T7 Entry Service (TES).....	42
4.10	Eurex/Xetra EnLight, the Selective Request for Quote Service (SRQS).....	43
4.11	Basket Trading – for derivatives markets only.....	44
4.12	Price Validity Checks.....	44
4.12.1	Price Reasonability Check.....	44
4.12.2	Extended Price Range Validation.....	44
4.13	Trade Notifications.....	45
4.13.1	Trade Characteristics.....	45
4.13.2	Trade Report Types.....	45
4.13.3	Trade Reconciliation.....	46
4.14	Cross Request.....	47
4.15	Request for Quote.....	48
4.16	Listener Broadcast.....	48
4.17	News.....	49
4.18	Risk Control.....	49
4.19	Service Availability – partition scope.....	50
4.20	Service Availability – market scope.....	51
4.21	Mass Cancellation Notification.....	51
4.22	Mass Cancellation Events.....	51
4.23	Trading Session Events.....	52
4.24	Timestamps.....	53
5.	Connectivity and Session Parameters.....	55
5.1	Connectivity Options.....	55
5.2	Session Concept.....	55
5.2.1	Low Frequency Session (LF) – Regular Trading.....	57
5.2.2	Low Frequency Session (LF) – Back Office.....	57
5.2.3	High Frequency Session (HF).....	58
5.3	Identification and Authentication.....	58
5.3.1	Session Authentication.....	58
5.3.2	User Authentication.....	59
5.3.3	Password Encryption.....	59
5.4	Failover.....	60
5.5	Throughput Limits.....	60

Enhanced Trading Interface (ETI)

Manual – Version 2

18. Mar. 2026

ETI Version 14.1

Page 5 of 77

5.5.1	Transaction Limit.....	61
5.5.2	Reject/Disconnect Limit.....	61
5.6	Mass Cancellation on Disconnect.....	61
5.7	Mass Cancellation on Duplicate Session Login.....	62
6.	Session Layer.....	63
6.1	Flat Binary Encoding.....	63
6.2	Logon.....	63
6.3	Logout.....	63
6.4	Heartbeat.....	64
6.5	Reject.....	64
6.6	Message Sequence Number.....	65
6.7	Application Message Sequencing.....	65
6.7.1	Application Message Identifier.....	65
6.7.2	Application Message Sequence Number.....	66
6.8	Session Data.....	66
6.9	Broadcast.....	67
6.10	Recovery.....	70
6.10.1	Retransmission.....	70
6.10.2	Preliminary Execution Report and Legally Binding Trade Notifications.....	72
7.	Appendix.....	73
7.1	Trade Reconciliation and Identifiers.....	73
7.2	Uniqueness of Identifiers.....	74
7.3	Quote Entry Status.....	75
8.	Change Log.....	77
8.1	T7 Release 14.1 – Version 2.....	77
8.2	T7 Release 14.1 – Version 1.....	77

Enhanced Trading Interface (ETI)

1. List of Abbreviations

Please find a list of all the abbreviations used in the document. The first time an abbreviation is introduced in the document it is written in brackets after the phrase.

AAO	Any Auction Only (order)
Admin GUI	Graphical User Interface for Administration functions, for example, user maintenance
BOC	Book or Cancel (order/quote)
CAO	Closing Auction Only (order)
CLIP – Eurex Improve	Client Liquidity Improvement Process (derivative markets only)
EMDI	Enhanced Market Data Interface
EOBI	Enhanced Order Book Interface
ETI	Enhanced Trading Interface
FOK	Fill or Kill (order)
GTC	Good Till Cancel
GTD	Good Till Date
HF	High-frequency (session)
IAO	Intraday Auction Only (order)
IOC	Immediate or Cancel (order)
LF	Low-frequency (session)
MDI	Market Data Interface
OAO	Opening Auction Only (order)
OCO	One Cancels the Other (order)
PLP	Passive Liquidity Provider Protection
AAO	Any Auction Only (order)
RDF	Reference Data File
RDI	Reference Data Interface
SRQS – Eurex/Xetra EnLight	Selective Request for Quote Service
TES	T7 Entry Service

Enhanced Trading Interface (ETI)

Manual – Version 2

18. Mar. 2026

ETI Version 14.1

Page 7 of 77

UDF	User-defined field that is not part of the official FIX Specification
TLS	Transport Layer Security
DigiCert	Certificate Issuer
QRS	Quote Request Solution
SMP	Self Match Prevention
SCP	Self Cross prevention

Enhanced Trading Interface (ETI)

2. Introduction

T7 is the industry-leading, multi-asset trading platform of the Deutsche Börse Group, its affiliates and partners.

The system has best-in-class performance and is scalable to support markets of any size. It can be customized to support different types of markets.

The Enhanced Trading Interface (ETI) is the high performance interface designed for participants who require the highest throughput and the lowest latency for their transactions.

All application messages between the client and the ETI follow FIX V5.0 SP2 semantics including all officially approved extension packs.

A proprietary session layer and flat binary encoding is used in order to provide the best performance.

The ETI provides all trading functions of T7:

- Order handling
- Quote handling including quote activation and inactivation
- Execution notifications
- Market maker protection mechanisms (derivatives markets only)
- Creation of a strategy (derivatives markets only)
- Request for quote
- Cross request
- T7 Entry Service
- Eurex/Xetra EnLight, the Selective Request for Quotes Service (SRQS)
- Eurex Improve, the Client Liquidity Improvement Process (CLIP, derivatives markets only)
- Basket Trading (derivatives markets only)
- Access to private reference data (e.g., list of own users/sessions, trade enrichment rules)
- specialist model: private quote request, locked stock functionality (cash markets only)

Additionally the ETI enables participants to subscribe to private trading data:

- Complete order history of all standard orders of any session belonging to the own business unit
- Trade, TES maintenance, TES trade and SRQS maintenance notifications for all sessions of the business unit

- specialist data: all required information for maintaining a specialist order book (cash markets only).

The following trading support information may be subscribed by each session:

- General messages from market supervision (news)

Private risk control messages are automatically sent to each session of the corresponding trading and clearing business unit.

The ETI does not provide any market data, or administrative functions.

2.1 Purpose

The purpose of this document is to provide the documentation of the current version of the ETI interface to participants. It describes the main concepts.

Please refer to the related documents listed below for details on message formats, release scope, system overview and functional reference.

2.2 Related Documents

2.2.1 ETI Message References

There are two message reference manuals for the cash and derivatives markets, ETI Cash Message Reference and ETI Derivatives Message Reference, respectively. They provide all message formats available. Both documents are provided together with the ETI Manual.

2.2.2 Release Notes

There are separate release note documents for the cash and derivatives markets, namely Release Notes Xetra and Release Notes Eurex. They give an overview of the functional and technical enhancements and changes to be introduced.

2.2.3 Functional and Interface Overview

There is a single overview document which gives an overview of T7, irrespective of any cash markets or derivatives markets specifics. It describes the major functional and system features, and provides a high level description of the interface landscape.

2.2.4 Cross System Traceability

There is a single overview document providing detailed information on order, quote and trade traceability across trading and clearing systems.

2.2.5 Functional Reference

There is a single reference document which gives detailed insight into the functional concepts of T7, irrespective of any cash markets or derivatives markets specifics.

2.2.6 Network Access Guide

There is a single reference document providing details on the network access options for T7 and its clearing interfaces. It includes detailed technical background information, such as router equipment information and port numbers for the configuration of firewalls.

Enhanced Trading Interface (ETI)

3. Technical Overview

The Enhanced Trading Interface (ETI) is the high performance trading interface designed for participants who require the highest throughput and the lowest latency. This transactional interface is provided in parallel to the FIX LF Interface whose target group is FIX 4.4 customers.

The ETI has the following main characteristics:

3.1 Message Based

The ETI is an asynchronous, message-based interface. The connection between the participant and T7 is established via a TCP/IP connection.

3.2 Low Footprint

Integration of the ETI interface into the participant's existing IT infrastructure is simplified due to the following:

- No special hardware is required.
- No exchange software has to be installed.
- Free choice of operating system, programming language and compiler versions.

3.3 Standard

In order to ease the implementation effort for participants, the ETI uses best practice methods taken from the financial industry, namely the use of the FIX Protocol standard.

3.4 Session Oriented

The ETI is a session oriented interface.

Participant applications connect to the trading system by Application Gateways that host the client sessions. A session is established by opening a TCP/IP session to the gateway.

The exchange provides a unique session identifier that is used when logging on. A Session ID can only establish one session at any time. Each participant application requires its own session.

ETI based applications receive information on orders and quotes which were entered in their own session. Several trading groups and traders of the same business unit may share a single session.

3.5 Backward Compatibility

ETI offers its enhancements with new XML and C-header files for each release. Use of these files can be deferred until the next releases under certain circumstances, because ETI supports the concept of layout-level backward compatibility. That means, in case of an application that was built for one of the previous releases, ETI expects and sends the old layouts.

New or modified field contents (valid values and/or usage), however, are not suppressed. In certain cases, even layout-level backward compatibility cannot be offered. Enhancements introduced within the new release cannot be used by applications that make use of the backward compatibility facility. Please note that XML and C-header files of the previous releases will not be re-distributed.

Therefore an application using the ETI interface should be able to deal with:

- new valid values as field content,
- usage changes of message fields,
- new message layouts in a broadcast stream.

T7 Release 14.1 supports backward compatibility. ETI clients implementing interface version '14.0' will be supported, too.

3.6 Subscription Mechanism

The ETI provides information across sessions via a subscription mechanism. This includes trade notifications, TES maintenance notifications, TES trade notifications, SRQS maintenance notifications (all at a business unit level), the complete order history of standard orders of another session (listener broadcast), specialist data, and public news messages.

3.7 Full Control in Case of a Failover

A heartbeat mechanism between the participant's application and T7 supports the detection of malfunctions of the underlying trading session between the participant and the Exchange gateway.

ETI does not include any mechanism for automatic failover. Participant applications can implement a failover mechanism of their choice that supports their requirements.

3.8 Architecture Throttle

The number of transaction requests transmitted to T7 per pre-defined time interval by each participant session is limited. This is to:

- prevent single participant sessions generating excessively high transaction rates, which might adversely affect exchange trading as a whole;
- guarantee fairness between participant sessions.

For more details, please refer to chapter Throughput Limits.

3.9 Session Login and User Login Throttle

The number of allowed session and user login requests transmitted to T7 per pre-defined time interval is limited. T7 will check both, the number of logins for a certain session and the number of logins for a certain user (via all sessions belonging to its business unit). For both, T7 will count the number of logins (per time interval). If that counter hits the limit, T7 will reject that login request and all the following ones (for either a certain session - session login, or a certain user - user login) within a "cooling" time interval. Then, T7 will re-set the related counter.

4. Service Description

4.1 FIX Semantics

All application messages between the participant and the ETI follow FIX V5.0 SP2 semantics including all officially approved extension packs.

Additionally user defined fields (UDF) and messages have been added to cover functional gaps in the FIX standard or to increase performance.

The following changes have been made for performance reasons:

- All rejections and errors on an application and session level are communicated via the FIX standard Reject (3) message.
- All parties are identified by individual UDFs instead of repeating groups. UDF tags and names were chosen in a way that supports automated translation to standard FIX repeating groups for parties.

The FIX messages are denoted in the following way:

- Message name (Message Type)

The FIX fields are denoted in the following way:

- Field name (FIX Tag)

FIX repeating groups and components are denoted in the following way:

- <Group name>

4.2 Party Identification

The **participant** is an entity accessing T7. The Eurex/Xetra concept of a member remains in place, and will be represented by a “participant” within T7. When trades are sent to the clearing system, the participant will be replaced by its corresponding member-ID.

Currently T7 supports that a participant has exactly one **business unit** taking part in trading at the exchange and at most one clearing business unit (in case the participant is a clearing member or settlement institute). All business units are identified by a business unit ID. A business unit belongs to a participant. The Enhanced Trading Interface deals only with the concept of a business unit.

A **user** is a person, such as a trader or an exchange market supervisor that interacts with T7. Users are identified by a user ID. A user belongs to one business unit. A user is a trader or administrator that logs on to the system to enter commands on the trading system.

Enhanced Trading Interface (ETI)

Manual – Version 2

18. Mar. 2026

ETI Version 14.1

Page 15 of 77

Users can be assigned to a specific **trader group**, along with the *head trader* and *supervisor roles*:

- A user with a user level of **head trader** may modify or cancel orders of any user belonging to the same trader group.
- A user with a user level of **supervisor** may modify or cancel orders of any user belonging to the same business unit.

All requests that are received by the Enhanced Trading Interface (ETI), with the exception of session related requests, must carry the ID of a user that enters the request.

The user of the business unit needs to be provided by the request submitter in the *SenderSubID (50)* of the request header. All orders and quotes must carry the identification of a physical person that is legally responsible for the order or quote.

The following party roles and attributes are used in ETI:

Party/ Party Attributes	D*	C*	Description	Relevant FIX Field
Participant/ Participant Short Name	X	X	The participant is an entity accessing T7.	RootPartyExecutingFirm (22401)
Business Unit / Business Unit ID	X	X	Indicates the company or a part of a company that is set up as an independent entity taking part in trading at the exchange.	PartyIDExecutingUnit (20059), RootPartyIDExecutingUnit (20459), PartyDetailIDExecutingUnit (20259)
User/ User ID	X	X	A business unit can have multiple users. A user can be a trading user and/or an administrator.	Username (553), SenderSubID (50)
Owning User/ Owning User ID	X	X	User who owns the transaction.	PartyIDExecutingTrader (20012), RootPartyIDExecutingTrader (20412), TargetPartyIDExecutingTrader (20612) RequestingPartyIDExecutingTrader (20812) PartyDetailIDExecutingTrader (20212)
Owning User/ Owning User Short Name	X	X	User who owns the transaction.	RootPartyExecutingTrader (22412) PartyDetailExecutingTrader (22212)

*D=Derivatives; C=Cash

Enhanced Trading Interface (ETI)

Manual – Version 2

18. Mar. 2026

ETI Version 14.1

Page 16 of 77

Party/ Party Attributes	D	C*	Description	Relevant FIX Field
Entering User/ Entering User ID	X	X	User who initiates/submits the order/quote transaction; could be the head trader or supervisor or a market supervision user.	PartyIDEnteringTrader (20036)
Entering Entity/ Entering Entity ID	X	X	Identifies the entity that entered the transaction; might be market supervision, the participant or the clearing member.	PartyIDEnteringFirm (20007) RequestingPartyIDEnteringFirm (20807)
Entering Entity/ Entering Entity Short Name	X	X	Identifies the entity that entered the transaction; might be market supervision, the participant or the clearing member.	RequestingPartyEnteringFirm (22807)
Trader Group/ Trader Group	X	X	Users can be assigned to a specific trader group.	TargetPartyIDDeskID (20676) PartyDetailIDDeskID (22276)
Session/ Session ID	X	X	Identification of the session. A session belongs to a business unit.	PartyIDSessionID (20055), TargetPartyIDSessionID (20655), RootPartyIDSessionID (20455)
Clearing Member/ Clearing Member Short Name	X	X	Clearing member identification.	RootPartyClearingFirm (22404), RequestingPartyClearingFirm (22804)
Clearing Business Unit/ Clearing Business Unit ID	X	X	Indicates the company or a part of a company that is set up as an independent entity taking part in clearing.	RootPartyIDClearingUnit (25026)
Counter Party /short name	-	X	Counter party for trades.	RootPartyContraFirm (22417)
Counter Party / Counter Party ID	-	X	Counter party for trades.	RootPartyIDContraUnit (25114)

Enhanced Trading Interface (ETI)

Manual – Version 2

18. Mar. 2026

ETI Version 14.1

Page 17 of 77

Party/ Party Attributes	D	C*	Description	Relevant FIX Field
External Member / External Member ID	X	-	Partner identification at the cooperation exchange is required for orders in the cooperation products.	PartyIDOrderOriginationFirm (20013), RootPartyIDOrderOriginationFirm (20413)
External Beneficiary / Final Beneficiary Account	X	-	Mandatory final beneficiary account at the cooperation exchange (KRX) required for orders in in the cooperation products.	PartyIDBeneficiary (20032), RootPartyIDBeneficiary (20432)
Sponsored Access Unit/ Sponsored Access Unit ID	X	-	Identification of the Sponsored Access Unit.	PartyIDSponsoredAccessUnit (20359), PartySponsoredAccessUnit (22359)

UDF tags for ETI parties consist of an offset and the standard “enum” value of *PartyRole* (452): e.g.,

- *PartyID* (448) has an offset of 20000
- *RootPartyID* (1117) has an offset of 20400
- *TargetPartyID* (1462) has an offset of 20600

UDF names for ETI parties consist of the standard FIX field name (*PartyID* (448), *RootPartyID* (1117), *TargetPartyID* (1462)) concatenated with the symbolic name of the standard “enum” value of *PartyRole* (452) as defined in the FIX Repository.

For example the ETI tag and field name for the user is *PartyIDExecutingTrader* (20036).

4.3 Security Identification

Each T7 product is processed on exactly one partition; a partition is a grouping of products. To optimize the routing to the corresponding partition, the product identifier needs to be provided in each order and quote transaction by the participant. The exceptions to this rule are Short Order Message Layouts, see chapter Short Order Message Layouts.

Both single and multi leg instruments are uniquely identified by the unique instrument identifier.

Additionally for multi leg instruments it is mandatory to specify the instrument type in all order requests.

Multi leg instruments are supported for derivatives markets only.

Enhanced Trading Interface (ETI)

Identifier	Description	Relevant FIX Tags
Product Identifier	The product identifier uniquely identifies a T7 product.	MarketSegmentID (1300)
Instrument Identifier	The instrument identifier uniquely identifies an instrument in the core system.	SecurityID (48), SimpleSecurityID (30048) ¹
Instrument Type (derivatives markets only)	Required for complex instruments, valid values are: 1 = Simple Instrument 2 = Standard Option Strategy 3 = Non-Standard Option Strategy 4 = Options Volatility Strategy 5 = Futures Spread 6 = Inter Product Spread 7 = Standard Future Strategy 8 = Pack and Bundle 9 = Strip 10= Flexible Simple Instrument 11=Commodity Strip 12= Scaled Simple Instrument 13=Non-Standard Volatility Strategy 14=Total Return Future Strategy	ProductComplex (1227)

4.4 Creation of a Strategy (derivatives markets only)

The Create Strategy message can be used to create a specified complex instrument on T7.

The T7 product identifier (*MarketSegmentID (1300)*), instrument type (*ProductComplex (1227)*) and the signature *<InstrmntLegGrp>* (description of the legs, their ratios and side) are mandatory attributes of the request.

Standard Options Strategies, Options Volatility Strategies, Standard Future Strategies, Pack and Bundle and Inter Product Spread require the entry of the strategy type (*SecuritySubtype (762)*). Please refer to functional product and instrument files on the Eurex website: www.eurexchange.com > Technology > Eurex Exchange's T7 > Documents.

¹ *SimpleSecurityID (30048)*: Instrument identifier for simple instruments (derivatives markets only). Should be filled with the 4 least significant bytes of SecurityID (48) provided in Reference Data of **Eurex RDI** and **Eurex RDF**.

Enhanced Trading Interface (ETI)

If the complex instrument already exists or is created successfully, the Create Strategy Response message returns the complex instrument identifier (*SecurityID (48)*) and the signature of the complex instrument.

Note: The signature which is returned by the T7 architecture may differ from the signature which was sent in the Create Strategy message, e.g. in order to match a pre-defined strategy template. The same is true for instrument type (*ProductComplex (1227)*) and strategy type (*SecuritySubType (762)*).

Only after a specific complex instrument has been requested and created, is it possible to enter orders or quotes for this instrument.

Strategies which are created by users are always temporary and are cancelled during end of day processing if their order book is empty.

4.5 Creation of a Flexible Simple Instrument (derivatives markets only)

The Create Flexible Instrument request can be used to create a user defined flexible instrument.

Supported Flexible Instruments are:

- Simple instruments (Options and Futures)

If the Flexible Instrument already exists or is created successfully, the Create Flexible Instrument response message returns the flexible instrument identifier (*SecurityID (48)*) with the instrument type *ProductComplex(1227) = 10 (Flexible simple instrument)* and the signature of the Flexible Instrument.

Flexible simple instruments can be used only for TES trading.

4.6 Order Identifiers

Market Participants may choose one of the following **options for order identification**:

- Use a constant client order ID over the complete lifetime of an order.
- Standard FIX policy of client order ID chaining: client order ID must change on every modification and cancellation request.
- Use the exchange order ID.

Market participants may use the client order ID for order and order related message identification.

Modification and cancellation of an order is supported both via the client order ID and the exchange order ID.

Once an order has a client order ID, it must have a client order ID for the rest of its life cycle. Respectively an order without a client order ID cannot be modified to have a client order ID later on in its life cycle.

4.6.1 Client Order ID

The FIX standard field *ClOrdID (11)* is used for the client order ID.

Enhanced Trading Interface (ETI)

Manual – Version 2

18. Mar. 2026

ETI Version 14.1

Page 20 of 77

Note: T7 will not enforce market participants to use a new *CIOrdID (11)* for application messages related to a resting order; i.e. the *CIOrdID (11)* may stay the same during the life cycle of an order.

The standard FIX policy regarding usage of client order IDs is additionally supported by ETI:

- When modifying or cancelling an order, a new *CIOrdID (11)* must be provided.
- The order to be modified or cancelled is identified with the *OrigCIOrdID (41)*. In this way the customer is able to find and track individual requests by their client order ID.

If a market participant changes the client order ID, the uniqueness of *CIOrdID (11)* is checked at entry time among currently live orders for the same instrument and session. Duplicate *CIOrdID (11)* values for the same session and instrument will be rejected with the exception of IOC or FOK Orders.

4.6.2 Exchange Order ID

The exchange order ID is assigned by the matching engine on order entry and remains unchanged for the entire life time of the order, for example, an order modify does not result in a change of the exchange order ID.

An exchange order ID is guaranteed to be unique among all orders of the same product.

The FIX standard field *OrderID (37)* is used for exchange order ID.

4.7 Order Handling

4.7.1 Order Types

The following order types are supported via the ETI interface:

Order Type	D*	C*	Description	Relevant FIX Tags
Market	X	X	Market orders have no specific price limit. They will be matched to the best price available.	OrdType (40) = 1
Limit	X	X	Limit orders include a specified price limit, and may not be executed at a price worse than that limit.	OrdType (40) = 2 Price (44)

Enhanced Trading Interface (ETI)

Order Type	D	C*	Description	Relevant FIX Tags
Stop (market)	X	X	Stop market orders create market orders when the specified trigger price is reached. Similar to market orders, stop orders are not visible in the order book for any market participant.	OrdType (40) = 3 StopPx (99)
Stop (limit)	X	X	Stop limit orders create limit orders when the specified trigger price is reached. Similar to market orders, stop orders are not visible in the order book for any market participant.	OrdType (40) = 4 Price (44) StopPx (99)
One-cancels-the-other (OCO)	X	X	An order that combines the functionality of a limit order and a stop (market) order, expressed as a single order. Traders will specify a limit price and a trigger price as part of one order.	OrdType (40) = 2 Price (44) StopPx (99)
Closing auction only (CAO)	X	X	Closing auction only orders may be entered during the entire trading day, but are only active during the closing auction phase.	TradingSessionSubID (625) = 4
Fill-or-kill (FOK)	-	X	A market or limit order, which is executed immediately and fully or not at all. If immediate and full execution is not possible, the order is cancelled without entry in the order book.	TimeInForce (59) = 4
Iceberg	-	X	Limit order that contains a peak quantity and an overall quantity. The peak quantity can be determined absolutely or randomly. Once the displayed quantity has been completely executed, a new peak is entered into the book. In auction trading, iceberg orders contribute with their overall volume.	DisplayQty (1138) DisplayLowQty (1085) DisplayHighQty (1086)

Enhanced Trading Interface (ETI)

Manual – Version 2

18. Mar. 2026

ETI Version 14.1

Page 22 of 77

Order Type	D	C*	Description	Relevant FIX Tags
Trailing stop	-	X	A Trailing Stop order is a Stop order whose stop limit is adjusted in accordance with the development of the reference price.	PegOffsetValueAbs (25109) PegOffsetValuePct (25110)
Any auction only (AAO)	X	X	Any auction only orders may be entered during the entire trading day, but are only active during any auction phase.	TradingSessionSubID (625) = 8
Intraday auction only (IAO)	-	X	Intraday auction only orders may be entered during the entire trading day, but are only active during intraday auctions.	TradingSessionSubID (625) = 6
Opening auction only (OAO)	X	X	Opening auction only orders may be entered during the entire trading day, but are only active during the opening auction phase.	TradingSessionSubID (625) = 2
Good-for-day (Day)	X	X	Day orders are deleted automatically in the next end-of-day processing.	TimeInForce (59) = 0
Good-till-date (GTD)	X	X	Order carries a specified date on which the order is automatically cancelled. Only supported for persistent (standard) orders.	TimeInForce (59) = 6 ExpireDate (432)
Good-till-cancelled (GTC)	X	X	Order remains valid until it is executed, or cancelled. Only supported for persistent (standard) orders.	TimeInForce (59) = 1
Immediate or Cancel (IOC)	X	X	An IOC order is to be filled immediately, either completely or to the extent possible; the portion that cannot be filled immediately is cancelled.	TimeInForce (59) = 3

Enhanced Trading Interface (ETI)

Manual – Version 2

18. Mar. 2026

ETI Version 14.1

Page 23 of 77

Order Type	D	C*	Description	Relevant FIX Tags
Book or Cancel (BOC)	X	X	An order, which is placed as resting liquidity in the order book to ensure passive execution. If immediate (and hence aggressive) execution is possible, the order is rejected without entry into the order book.	ExecInst (18) = 6 (encoded as bit map with third bit being set)
Persistent	X	X	A persistent order is an order that is reinstated at the beginning of the Business Day (if valid for that Business Day) or after a Market Reset.	ExecInst (18) = H (encoded as bit map with first bit being set)
Non-persistent	X	X	Non-persistent orders are automatically cancelled at the end of the Business Day or after a Market reset. They are also cancelled in case of some system events (see Mass Cancellation Notification) and session connection problems or normal session logout.	ExecInst (18) = Q (encoded as bit map with second bit being set)
Standard	X	X	The complete order history can be recovered via retransmission requests. The order data is visible to all low-frequency sessions belonging to the same business unit. Standard orders can be persistent or non-persistent	ApplSeqIndicator (28703) = 1 (Recovery_Required)

Enhanced Trading Interface (ETI)

Manual – Version 2

18. Mar. 2026

ETI Version 14.1

Page 24 of 77

Order Type	D	C*	Description	Relevant FIX Tags
Lean	X	X	<p>For lean orders, the execution notifications can be recovered (via retransmission requests on the session data channel). All data on lean orders are visible only to the session that submitted the order.</p> <p>Lean orders are always non-persistent.</p>	<p>ApplSeqIndicator (28703) = 0 (No_Recovery_Required)</p>

4.7.2 Cancellation

The owner of an order is the entering business unit, session and user. On behalf cancellation via a different session of the same business unit is supported. Head traders of the same trader group and the supervisor of the business unit may cancel on behalf of the owning user.

Cancelling an order will remove the remainder of a live order from the T7 architecture's order book.

The participant may either use the *OrigClOrdID* (41), unique per instrument and the *TargetPartyIDSessionID*(20655) or the *OrderID* (37), unique per product to identify the corresponding order to cancel. The ETI interface will respond with an *Execution Report* (8) or *Reject* (3) message for confirmation or rejection respectively.

4.7.3 Modification

An order may only be modified if the request comes from the same user, or a supervisor, or a head trader from the same trader group. Modification by another session of the same business unit is only supported for standard orders.

The participant may either use the *OrigClOrdID* (41) or the *OrderID* (37) to identify the corresponding order to modify. The ETI interface will respond with an *Execution Report* (8) or *Reject* (3) message for confirmation or rejection respectively.

Enhanced Trading Interface (ETI)

Manual – Version 2

18. Mar. 2026

ETI Version 14.1

Page 25 of 77

The ownership of the modified order can be modified by the *OwnershipIndicator (28743)*. The Short Order Message Layout does not support the change ownership functionality.

Ownership Indicator (28743)	Description	Relevant FIX Tags
No change of ownership	No change of the order's ownership. The executing user is not changed	OwnershipIndicator (28743) = 0
Change ownership to execution trader	The entering trader becomes the owner of the order, i.e. is now the executing trader	OwnershipIndicator (28743) = 1

Orders that have been completely filled cannot be modified.

The following order attributes cannot be modified:

- Security identification: *MarketSegmentID (1300)*, *SimpleSecurityID (30048)*, *SecurityID (48)*, *ProductComplex (1227)*
- *Side (54)*
- *TradingSessionSubID (625)*
- *ExecInst (18)*: *persistent to non-persistent and vice-versa*
- *AppSeqIndicator (28703)*.

An order that is modified will lose its time priority, i.e. it will get a new priority timestamp, if

- *Price (44)* is modified in any way, or
- *OrderQty (38)* is increased, or
- *OrdType (40)* is changed, or
- *ExecType (150)* is "L = Triggered by system", or
- for cash markets only: *ExecRestatementReason (378)* is "155 = Order refreshed".
- for cash markets only: *ExecRestatementReason (378)* is "205 = Midpoint Sweep order changed to regular order".

Enhanced Trading Interface (ETI)**4.7.4 Total Order Quantity Modification**

Participants need to specify the new total order quantity when modifying the field *OrderQty* (38). This approach leads, from a participant's point of view, to a clear and deterministic behaviour by specifying a total execution limit. The previously executed quantity of an order is maintained and is used to calculate the new open quantity. If this is zero or less then the order will be cancelled.

During the lifetime of an order, the total quantity of the order is always equal to the sum of the open order quantity and the accumulated traded quantity:

$$OrderQty (38) = CumQty (14) + LeavesQty (151)$$

After an order has been cancelled (*OrdStatus* (39) is "4 = Cancelled"), the total quantity of the order is equal to the sum of the cancelled order quantity and the accumulated traded quantity, while the open order quantity is zero.

$$OrderQty (38) = CumQty (14) + CxlQty (84)$$

4.7.5 Self-Match-Prevention (prevention of cross matches)

The T7 system offers a Self-Match-Prevention mechanism to avoid matching (crossing) of orders and/or quotes of one business unit having the same value in the field *MatchInstCrossID* (28744).

For orders, any Self-Match-Prevention event involved in a transaction is reported in the order response and/or notification by the field *CrossedIndicator* (2523) set to "1 = Cross rejected". In the case the order has not been deleted completely (*OrderStatus* (39) is not "4 = Cancelled"), the total order quantity of the order is reduced by the system and must be recalculated by the formulas given in chapter before. Please note that in case the order has deleted completely due to a certain SMP event the quantity of the order is not reduced to reflect the last SMP event.

For quotes, a Self-Match-Prevention event is reported in the Quote Execution Notification (10407) by the *QuoteEventReason* (28733) field set to "16 = Cross rejected". If the Self-Match-Prevention event leads to a partial deletion or full of the quote (*QuoteEventType* (28539) set to "6 = Quantity removed") the deleted quote quantity is given in *QuoteEventQty* (28542).

4.7.6 Quote Deletion due to Passive Liquidity Protection and Pending Cancellation Executed

The following combinations of fields in the Quote Execution Notification (10407) indicate that the relevant quote side has been removed:

- *QuoteEventType* (28539) is set to 6 (Quantity removed) and *QuoteEventReason* (28733) is set to 14 (Pending Cancellation Executed)
- *QuoteEventType* (28539) is set to 6 (Quantity removed) and *QuoteEventReason* (28733) is set to 18 (Quote deleted due to passive liquidity protection).

Enhanced Trading Interface (ETI)**4.7.7 Order Mass Cancellation**

Using the Order Mass Cancellation Request, a user can cancel all orders within a specified instrument, user or session scope. The instrument scope can be extended to an entire product. The session scope can be extended to all sessions of the submitting user or may reference a single but different session.

Additionally, users are able to delete multiple orders on the buy or sell side of an order book up or down to a particular price level. When using side and price as filter criteria, cancellation will be for a single instrument, and market orders would not get removed.

If the Order Mass Cancellation Request is rejected by the trading system, no orders have been deleted.

The following filter criteria can be specified:

Filter Criteria:Target Parties	Description
TargetPartyIDExecutingTrader (20612)	Cancel all orders owned by a user ID.
TargetPartyIDSessionID (20655)	Cancel all orders of a session depending on the authorization of the user role.
Price(44)	Price to which limit orders are deleted (only in connection with the Side filter attribute) – supported for a single instrument only.
Side(54)	Side for which limit orders are deleted (only in connection with the Price filter attribute) – supported for a single instrument only.

The user may filter on a specific owning session or the session scope can be extended to all sessions of the business unit.

A **head trader** may cancel all orders of any user belonging to the same trader group. Additionally the session may be used as filter criteria.

A **supervisor** may opt for the cancellation of all orders of any user, and any session of the business unit.

The omission of the filter criteria results in a mass cancellation request for all orders of the business unit in a product or instrument respectively.

Note: Mass cancellation confirmation is not provided on a single order or quote level. Using the filter *'Price'(44)* and *'Side'(54)*, affects only limit orders (Stop or Market orders are not affected). The owning session will be informed about the scope of the cancellation by a summary record with an exception list. Please find more information regarding unsolicited mass order cancellation in chapter Mass Cancellation Notification.

4.7.8 Account Structure

Enhanced Trading Interface (ETI)

Manual – Version 2

18. Mar. 2026

ETI Version 14.1

Page 28 of 77

The field *TradingCapacity (1815)* must be provided for orders. It designates if the trader is acting in the capacity of an Agent, trading for its own account or acting as a market maker.

For quotes, the trader is implicitly always acting as a market maker.

Business Type	D*	C*	Description	Relevant FIX Tags
Agency	X	X	Market Participant is trading on behalf of clients.	TradingCapacity (1815) = 1
Issuer/Liquidity Provider	-	X	Specialist is trading on behalf of issuer/liquidity provider.	TradingCapacity (1815) = 3
Proprietary	X	X	Market Participant is trading for its own account.	TradingCapacity (1815) = 5
Market Making	X	X	Market Participant is acting as a Market Maker.	TradingCapacity (1815) = 6
Riskless Principal	-	X	Market Participant is acting on his own name for a foreign account.	TradingCapacity (1815) = 9
Retail Customer (Agency)	-	X	Market Participant is trading on behalf of retail clients.	TradingCapacity (1815) = 10
Retail Market Maker	-	X	Market Participant is acting as a Retail Market Maker.	TradingCapacity (1815) = 11

For derivatives markets:

The entry of a T7 account type and number is supported via the *Account (1)* field. It designates the account type and number to be used for the execution of that order when submitted to clearing. The field *Account (1)* needs to be provided only for orders.

Note, T7 will not evaluate the consistency between *TradingCapacity (1815)* and *Account (1)* for an order.

4.7.9 Short Order Message Layouts

ETI supports order message layouts with reduced message content for simple, complex, and simple and complex instruments: New Order Simple/Multi Leg/Simple or Multi Leg (Short Layout) and Replace Order Simple/Multi Leg/Simple or Multi Leg (Short Layout).

For short order message layouts the following order attributes are implicitly set:

- Limit order

*D=Derivatives; C=Cash

Enhanced Trading Interface (ETI)

Manual – Version 2

18. Mar. 2026

ETI Version 14.1

Page 29 of 77

- Product Identifier (not for complex instruments)

The usage of *TimeInForce* (59) in short order message layouts is limited to the following options:

- Good for Day
- Immediate or Cancel (IOC)
- Fill or Kill (FOK) for cash markets only
- Good till Cancel

Note: Orders entered via New Order Single/Multi Leg/Single or Multi Leg (Short Layout) may only be modified via Replace Order Single/Multi Leg/Single or Multi Leg (Short Layout).

Participants may define via the T7 Admin GUI trade enrichment rules for trades resulting from order executions.

4.7.10 Order Status and Execution Reports

The *Execution Report* (8) message is used to communicate many different events. The type of event is specified in the *ExecType* (150) field and the *OrdStatus* (39) field is used to convey the current status of an order.

The T7 ETI will always send only one response message per request. Unsolicited events are communicated via notifications.

The following table shows different order scenarios and their usage of *OrdStatus* (39), *ExecType* (150) and *ExecRestatementReason* (378) in the *Execution Report* (8) sent by the ETI Interface:

Scenario	D*	C*	OrdStatus(39)	ExecType (150)	ExecRestatement Reason(378)
NEW ORDER					
Non-IOC/FOK order added without execution	X	X	0=New	0=New	101=Order added
Midpoint Sweep Order added without execution	-	X	0=New	0=New	205=Midpoint Order Sweep
Non-IOC order added with partial execution	X	X	1=Partially filled	F=Trade	101=Order added
Midpoint Sweep Order added with partial execution in CLOB	-	X	1=Partially filled	F=Trade	205=Midpoint Order Sweep
Order (IOC/FOK or non-IOC) added with full execution	X	X	2=Filled	F=Trade	101=Order added
Order (IOC/FOK or non-IOC) added with full execution in CLOB	-	X	2=Filled	F=Trade	205=Midpoint Order Sweep

Enhanced Trading Interface (ETI)

Manual – Version 2

18. Mar. 2026

ETI Version 14.1

Page 30 of 77

IOC order added without execution	X	X	4=Cancelled	4=Cancelled	105=IOC order cancelled
IOC order added with SMP reduction of total quantity to a value greater than zero and without execution of the remaining quantity	X	X	4=Cancelled	4=Cancelled	105=IOC order cancelled
FOK order added without execution	-	X	4=Cancelled	4=Cancelled	107=FOK order cancelled
IOC order added with partial execution	X	X	4=Cancelled	F=Trade	105=IOC order cancelled
IOC order added with SMP reduction of total quantity and partial execution of the remaining quantity	X	X	4=Cancelled	F=Trade	105=IOC order cancelled
Attempt to add executable BOC order	X	X	4=Cancelled	4=Cancelled	212=BOC order cancelled
Stop order added and triggered without execution	X	-	0=New	L=Triggered	101=Order added
Stop order added and triggered with partial execution	X	-	1=Partially filled	F=Trade	101=Order added
Stop order added and triggered with full execution	X	-	2=Filled	F=Trade	101=Order added
Closing/opening/any auction only order added outside of the respective auction	X	X	9=Suspended	0=New	101=Order added
Order added with SMP or SCP reducing total quantity to zero	X	X	4=Cancelled	4=Cancelled	101=Order added
Non-IOC order added with SMP reducing total quantity to a value greater than zero	X	X	0=New	0=New	101=Order added
Non-IOC Order added with SMP quantity reduction and partial execution of the remaining quantity	X	X	1=Partially filled	F=Trade	101=Order added
Order (IOC and non-IOC) added with SMP quantity reduction and full execution of the remaining quantity	X	X	2=Filled	F=Trade	101=Order added
Stop order added and triggered with SMP reducing total quantity to zero	X	-	4=Cancelled	4=Cancelled	101=Order added
Stop order added and triggered with SMP quantity reduction and without execution of the remaining quantity	X	-	0=New	L=Triggered	101=Order added
Stop order added and triggered with SMP quantity reduction and partial execution of the remaining quantity	X	-	1=Partially filled	F=Trade	101=Order added

Enhanced Trading Interface (ETI)

Manual – Version 2

18. Mar. 2026

ETI Version 14.1

Page 31 of 77

Stop order added and triggered with SMP quantity reduction and full execution of the remaining quantity	X	-	2=Filled	F=Trade	101=Order added
Locked Stock - Add order in Freeze	-	X	A=Pending New	A=Pending New	138=Pending New
Locked Stock - Pending New Order applied	-	X	0=New	0=New	141=Pending New Applied
REPLACE ORDER					
Unfilled order modified (remaining non-IOC) without execution	X	X	0=New	5=Replaced	102=Order replaced 181=Ownership changed
Unfilled order modified (remaining non-IOC) with partial execution	X	X	1=Partially filled	F=Trade	102=Order replaced 181=Ownership changed
Partially filled order modified without execution	X	X	1=Partially filled	5=Replaced	102=Order replaced 181=Ownership changed
Partially filled order modified (remaining non-IOC) with SMP quantity reduction and without execution of the remaining quantity	X	X	1=Partially filled	5=Replaced	102=Order replaced 181=Ownership changed
Order quantity modified at or below executed quantity	X	X	2=Filled	5=Replaced	102=Order replaced 181=Ownership changed
Partially filled order modified (remaining non-IOC) with partial execution	X	X	1=Partially filled	F=Trade	102=Order replaced 181=Ownership changed
Partially filled order modified (remaining non-IOC) with SMP quantity reduction and partial execution of the remaining quantity	X	X	1=Partially filled	F=Trade	102=Order replaced 181=Ownership changed
Order modified (to IOC, FOK or non-IOC) with full execution	X	X	2=Filled	F=Trade	102=Order replaced 181=Ownership changed
Order modified to IOC without execution	X	X	4=Cancelled	4=Cancelled	105=IOC order cancelled 181=Ownership changed

Enhanced Trading Interface (ETI)

Manual – Version 2

18. Mar. 2026

ETI Version 14.1

Page 32 of 77

Order modified to IOC with partial execution	X	X	4=Cancelled	F=Trade	105=IOC order cancelled 181=Ownership changed
Order modified to FOK without execution or partial execution	-	X	4=Cancelled	4=Cancelled	107=FOK order cancelled 181=Ownership changed
Stop order modified and triggered without execution	X	-	0=New	L=Triggered	102=Order replaced 181=Ownership changed
Stop order modified and triggered with partial execution	X	-	1=Partially filled	F=Trade	102=Order replaced 181=Ownership changed
Stop order modified and triggered with full execution	X	-	2=Filled	F=Trade	102=Order replaced 181=Ownership changed
Closing/Opening/Any auction only order modified outside of the respective auction	X	X	9=Suspended	5=Replaced	102=Order replaced 181=Ownership changed
Unfilled order modified with SMP reducing total quantity to a value greater than zero and without execution of the remaining quantity	X	X	0=New	5=Replaced	102=Order replaced 181=Ownership changed
Order modified becoming executable and SMP reducing total quantity to zero	X	X	4=Cancelled	4=Cancelled	102=Order replaced 181=Ownership changed
Unfilled order modified (remaining non-IOC) with SMP quantity reduction and partial execution of the remaining quantity	X	X	1=Partially filled	F=Trade	102=Order replaced 181=Ownership changed
Unfilled order modified with SMP quantity reduction and full execution of the remaining quantity	X	X	2=Filled	F=Trade	102=Order replaced 181=Ownership changed
Stop order modified and triggered and SMP reducing total quantity to zero	X	-	4=Cancelled	4=Cancelled	102=Order replaced 181=Ownership changed
Stop order modified and triggered without execution and SMP reducing total quantity to a value greater than zero	X	-	0=New	L=Triggered	102=Order replaced 181=Ownership changed

Enhanced Trading Interface (ETI)

Manual – Version 2

18. Mar. 2026

ETI Version 14.1

Page 33 of 77

Stop order modified and triggered with SMP quantity reduction and full execution of the remaining quantity	X	-	2=Filled	F=Trade	102=Order replaced 181=Ownership changed
Stop order modified and triggered with SMP quantity reduction and partial execution of the remaining quantity	X	-	1=Partially filled	F=Trade	102=Order replaced 181=Ownership changed
Attempt to modify an order to BOC and becoming executable	X	X	4=Cancelled	4=Cancelled	212=BOC order cancelled 181=Ownership changed
Locked Stock - Modify order in Freeze	-	X	E=Pending Replace	E=Pending Replace	139=Pending Replace
Locked Stock - Pending Modify Order applied	-	X	0=New	5=Replaced	142=Pending Replace Applied
Locked Stock - Pending Modify Order applied on a partially filled order	-	X	1=Partially filled	5=Replaced	142=Pending Replace Applied
Locked Stock - Pending Quantity Modification applied (Total < Traded).	-	X	2=Filled	5=Replaced	142=Pending Replace Applied
CANCEL ORDER					
Order deleted	X	X	4=Cancelled	4=Cancelled	103=Order cancelled
Order deletion deferred due to instrument freeze	X	X	6=Pending	6=Pending	197=Order cancellation pending
Actual order deletion without execution after being initially deferred	X	X	4=Cancelled	4=Cancelled	199=Pending cancel executed
Closing/Opening/Any auction only order deleted outside the respective auction	X	X	9=Suspended	4=Cancelled	103=Order cancelled
Actual order deletion with partial execution after being initially deferred	X	X	4=Cancelled	F=Trade	199=Pending cancel executed
Order cancelled because of instrument state change to auction	-	X	4=Cancelled	4=Cancelled	122=Instrument State Change
Suspended/inactive order deletion without execution after being initially deferred	X	X	9=Suspended	4=Cancelled	199=Pending cancel executed
CLIP Order deleted due to member has been disabled	X	-	4=Cancelled	4=Cancelled	117=Member disable
Order deleted due to QRS timeout	-	X	4=Cancelled	4=Cancelled	316=QRS_Expiry

Enhanced Trading Interface (ETI)

Manual – Version 2

18. Mar. 2026

ETI Version 14.1

Page 34 of 77

Market order deleted due to no bid/ask price on the opposite side	-	X	4=Cancelled	4=Cancelled	302=Market Order uncrossing
UNSOLICITED EVENT					
Partial execution of order resting on book	X	X	1=Partially filled	F=Trade	108=Book order executed
Full execution of order resting on book	X	X	2=Filled	F=Trade	108=Book order executed
Partial execution of resting order (CLIP-Cross, IOC) and deletion of remaining quantity	X	-	4=Cancelled	F=Trade	108=Book order executed
Market order triggered and partially executed	X	X	1=Partially filled	F=Trade	135=Market order triggered
Market order triggered and fully executed	X	X	2=Filled	F=Trade	135=Market order triggered
Resting stop order triggered with partial execution	X	X	1=Partially filled	F=Trade	172=Stop order triggered
Resting stop order triggered with full execution	X	X	2=Filled	F=Trade	172=Stop order triggered
Resting OCO order triggered with partial execution	X	X	1=Partially filled	F=Trade	164=OCO order triggered
Resting OCO order triggered with full execution	X	X	2=Filled	F=Trade	164=OCO order triggered
Closing auction only order executed with partial execution	X	X	9=Suspended	F=Trade	150=CAO order inactivated
Market order triggered with SMP quantity reduction and full execution of the remaining quantity	X	X	2=Filled	F=Trade	135=Market order triggered
Market order triggered with SMP quantity reduction and partial execution of the remaining quantity	X	X	1=Partially filled	F=Trade	135=Market order triggered
Resting stop order triggered with SMP quantity reduction and full execution of the remaining quantity	X	X	2=Filled	F=Trade	172=Stop order triggered
Resting stop order triggered with SMP quantity reduction and partial execution of the remaining quantity	X	X	1=Partially filled	F=Trade	172=Stop order triggered

Enhanced Trading Interface (ETI)

Manual – Version 2

18. Mar. 2026

ETI Version 14.1

Page 35 of 77

Resting OCO order triggered with SMP quantity reduction and full execution of the remaining quantity	X	X	2=Filled	F=Trade	164=OCO order triggered
Resting OCO order triggered with SMP quantity reduction and partial execution of the remaining quantity	X	X	1=Partially filled	F=Trade	164=OCO order triggered
Resting Iceberg Order partial executed with refill	-	X	1=Partially filled	F=Trade	155=Order refreshed
Resting Iceberg Order fully executed	-	X	2=Filled	F=Trade	155=Order refreshed
Full execution of order resting on book after SMP partial delete	-	X	2=Filled	F=Trade	108=Book order executed
Full Match of CLIP request	X	-	2=Filled	F=Trade	340=CLIP Execution
Partial Match of CLIP Request(PropBroker only)	X	-	4=Cancelled	F=Trade	340=CLIP Execution
Open auction only order executed with partial execution	X	X	9=Suspended	F=Trade	152=OAO order inactivated
Any auction only order executed with partial execution	X	X	9=Suspended	F=Trade	154=AAO order inactivated
Intraday auction only order executed with partial execution	X	X	9=Suspended	F=Trade	160=IAO order inactivated
Unfilled closing auction only order moved into closing auction	X	X	0=New	D=Restated	149=CAO order activated
Partially filled closing auction only order moved into closing auction	X	X	1=Partially filled	D=Restated	149=CAO order activated
Closing auction only order (unfilled or partially filled) moved out of closing auction	X	X	9=Suspended	9=Suspended	150=CAO order inactivated
Unfilled opening auction only order moved into opening auction	X	X	0=New	D=Restated	151=OAO order activated
Partially filled opening auction only order moved into opening auction	X	X	1=Partially filled	D=Restated	151=OAO order activated
Opening auction only order (unfilled or partially filled) moved out of opening auction	X	X	9=Suspended	9=Suspended	152=OAO order inactivated
Unfilled any auction only order moved into any auction	X	X	0=New	D=Restated	153=AAO order activated
Partially filled any auction only order moved into any auction	X	X	1=Partially filled	D=Restated	153=AAO order activated
Any auction only order (unfilled or partially filled) moved out of any auction	X	X	9=Suspended	9=Suspended	154=AAO order inactivated

Enhanced Trading Interface (ETI)

Manual – Version 2

18. Mar. 2026

ETI Version 14.1

Page 36 of 77

Unfilled Intraday auction only order moved into Intraday auction	-	X	0=New	D=Restated	159=IAO order activated
Partially filled Intraday auction only order moved into Intraday auction	-	X	1=Partially filled	D=Restated	159=IAO order activated
Intraday auction only order (unfilled or partially filled) moved out of Intraday auction	-	X	9=Suspended	9=Suspended	160=IAO order inactivated
Restatement of unfilled order	X	X	0=New	D=Restated	1=Order book restatement
Restatement of partially filled order	X	X	1=Partially filled	D=Restated	1=Order book restatement
Restatement of closing/opening/any auction only order (unfilled or partially filled)	X	X	9=Suspended	D=Restated	1=Order book restatement
Complete deletion of order due to SMP or SCP without execution	X	X	4=Cancelled	4=Cancelled	103=Order cancelled
Partial deletion of unfilled order due to SMP without execution	X	X	0=New	D=Restated	1=Order book restatement
Partial deletion of partially filled order due to SMP without execution	X	X	1=Partially filled	D=Restated	1=Order book restatement
Trailing Stop Order - Update Stop Price	-	X	0=New	D=Restated	213=Trailing Stop Update
Clip Request cancelled because of arrangement timeout	X	-	4=Cancelled	4=Cancelled	343=CLIP arrangement time out
Deletion of CLIP request after exposure timer expired (PropBroker only)	X	-	4=Cancelled	4=Cancelled	340=CLIP Execution
PLP - After Mass Deletion - Aggressive order cancelled after deferred re-entry	X	X	4=Cancelled	4=Cancelled	114=Changed to IOC
PLP - After Mass Deletion - Aggressive order full match after deferred re-entry	X	X	2=Filled	F=Trade	114=Changed to IOC
PLP - After Mass Deletion - Aggressive order partial match after deferred re-entry	X	X	4=Cancelled	F=Trade	114=Changed to IOC
Clip Request cancelled because of arrangement validation	X	-	4=Cancelled	4=Cancelled	344=CLIP arrangement validation
Resting stop order triggered without execution	X	X	0=New	L=Triggered	172=Stop order triggered
Resting OCO order triggered without execution	X	X	0=New	L=Triggered	164=OCO order triggered
Resting market order triggered without execution and SMP reducing total quantity to zero	X	X	4=Cancelled	4=Cancelled	135=Market order triggered

Enhanced Trading Interface (ETI)

Manual – Version 2

18. Mar. 2026

ETI Version 14.1

Page 37 of 77

Resting market order triggered without execution and SMP reducing total quantity to a value greater than zero	X	X	0=New	D=Restated	135=Market order triggered
Resting stop order triggered without execution and SMP reducing total quantity to zero	X	X	4=Cancelled	4=Cancelled	172=Stop order triggered
Resting stop order triggered without execution and SMP reducing total quantity to a value greater than zero	X	X	0=New	L=Triggered	172=Stop order triggered
Resting OCO order triggered without execution and SMP reducing total quantity to zero	X	X	4=Cancelled	4=Cancelled	164=OCO order triggered
Resting OCO order triggered without execution and SMP reducing total quantity to a value greater than zero	X	X	0=New	L=Triggered	164=OCO order triggered
Partial filled OCO order triggered without execution	X	X	1=Partially filled	L=Triggered	164=OCO order triggered

Note: For performance reasons ETI will use the standard FIX Reject (3) message for all rejections on application and session level.

4.7.11 Order Book Restatement

Order status inquiries are not supported by the ETI. Participants must maintain the state of orders based on the *Execution Report (8)* messages.

During the start-of-day phase and after a market reset event, all active orders of a session will be transmitted to the market participant via the respective session.

At first a Trading Session Event message is sent informing the participant about start-of-day or a market reset event per partition respectively, optionally followed by Extended Order Information messages for each restated order of the corresponding session and finally a Trading Session Event message is sent indicating the end of the restatement per product.

In case a session is cancelled by the member (disconnected from the ETI gateway) all open non-persistent orders and quotes which were entered via this session will be deleted and will not be restated.

Note: Order book restatement messages (and the Trading Session Event messages mentioned above) are recoverable. The owning session can request a retransmission in the event it was not logged on at the time. Order book restatement messages (including the Trading Session Event messages mentioned above) are also sent on the listener broadcast. The retransmission basically replay's the messages requested in the scope. For example, if an application requests for all messages sent, it gets a replay of the recoverable messages beginning with the replay of the restatement messages that were sent out during the start of day and after a market reset event followed by any other recoverable messages that followed for the scope.

Enhanced Trading Interface (ETI)

Manual – Version 2

18. Mar. 2026

ETI Version 14.1

Page 38 of 77

For cash markets only: during the order book restatement (as described above) there are *ExtendedDeletionReport* (10128) messages reporting “over night” deletion of orders. Please refer the Functional Reference documentation for the details.

4.7.12 Deprecated Order Management Requests

With T7 Release 12.0, Deutsche Boerse introduced five generic new ETI requests which enable trading participants and vendors to use one request for both simple and complex instruments for order additions, modifications, and deletion respectively.

The new requests were introduced to align order layouts across T7 exchanges, to combine simple and complex layouts into one request, and to rearrange fields specially for latency sensitive trading participants.

With T7 Release 13.1 the following requests are marked as deprecated:

- New Order Single
- New Order Single (short layout)
- derivatives markets only: New Order Multi Leg
- derivatives markets only: New Order Multi Leg (short layout)
- Replace Order Single
- Replace Order Single (short layout)
- derivatives markets only: Replace Order Multi Leg
- derivatives markets only: Replace Order Multi Leg (short layout)
- derivatives markets only: Cancel Order Single
- derivatives markets only: Cancel Order Multi Leg

Deutsche Boerse aims to decommission these requests with the ETI version 14.1 in mid-2026.

4.8 Quote Handling

4.8.1 Quote Characteristics

A (double sided) quote establishes both a limit to buy and to sell within a single transaction. Quantities to buy and to sell are independent of one another. The T7 architecture supports single-sided as well as double-sided quotes.

Enhanced Trading Interface (ETI)

A quote is owned by the session. A session may have only one quote per instrument. Sessions belonging to the same business unit may have different quotes in the same instrument, but only one quote per session. Quotes of the same business unit might be executed against each other.

Please note: for the market model continuous auction with specialist (cash markets only) there is only one quote per instrument. Therefore, any new quote (even from another session) will update the existing one.

A user may overwrite, modify or cancel any quote of another user that is owned by the same session.

One session cannot enter or modify individual quotes of another session.

Sessions may cancel all quotes or inactivate and reactivate the quotes of another session belonging to the same business unit.

Quotes are non-persistent; they are automatically cancelled in case of:

- Exchange system failure (i.e. market reset)
- Session logs out
- Session loses the connection to the trading gateway
- Session logs in twice via a different connection
- Mass Cancellation events
- At the end of the business day.

Please note that the statements above are not valid for SRQS quotes.

4.8.2 Maintaining Quotes

Quotes are entered using the Mass Quote message. A Mass Quote request may contain several single-sided or double-sided quotes for different instruments of the same product.

There can only be one quote for an instrument in a Mass Quote message. Actions can be different for each side of a single instrument, for example in a double-sided quote; a trader can cancel one side and replace the other side.

The Client Order ID is not supported for quotes; instead the participant defines a mass quote identifier (*QuoteID (117)*) for each Mass Quote message. The mass quote identifier is provided in each Quote Execution Notification (*QuoteMsgID (1166)*) and Trade Notification (*CIOrdID (11)*).

T7 has two methods for updating quotes:

- Quote Entry
- Quote Modification

Enhanced Trading Interface (ETI)

Note: Quote Entry and Quote Modification cannot both be used within the same Mass Quote message.

The two types of quoting models are distinguished by the usage of different values in field QuoteSizeType (28723):

Quoting Model	QuoteSizeType (28723)
Quote Entry	2 = Open Size
Quote Modification	1 = Total Size

Every quote entry simply overwrites an existing quote without considering an existing executed quantity. For each quote entry request, the user must specify the new price and the new quantity of the quote side. Under quote entry, there can only be one entry per instrument. If a two sided quote is entered then both sides must be in the same entry.

Accepted quotes are not confirmed in the Mass Quote Response unless additional information needs to be conveyed back to the submitter. The field *QuoteEntryStatus (1167)* identifies the status of quote entries of a Mass Quote that could not be processed as requested.

If however, the entire mass quote request is rejected, then any old quotes of the session remain unaffected; even if there had been new quotes for the corresponding instruments in the rejected mass quote request.

Participants may define via the T7 Admin GUI trade enrichment rules for text fields or fields required for quoting in partner exchange products (derivatives markets only) applied to trades resulting from quote executions.

Quote modification allows a trader to modify quotes with a total execution limit, similar to orders where the quantity specified by the trader is always a total order quantity. The previously executed quantity of a quote side is maintained and is used to calculate the new open quantity. If this is zero or less then the quote side will be cancelled. If the previous quote side is not found, for example as it has traded out, then the modification for that quote side is ignored.

The priority timestamp of a quote stored in the order book is preserved when the price is left unchanged and the open quote quantity is not strictly increased. Like for orders, when price and quantity are not modified, the priority timestamp is also preserved. In all other cases, the priority timestamp is refreshed.

To **cancel** a quote side, the quote quantity must be set to zero and the limit price field must be omitted. Only quotes entered via the same session can be cancelled with the *Mass Quote Request*.

Quote mass cancellation functionality is provided via Quote Mass Cancellation Request. With the help of this request it is possible to cancel all own quotes in a product as well as all quotes in a product of another session belonging to the same business unit. Please find more information regarding unsolicited mass cancellation in chapter Mass Cancellation Notification.

Enhanced Trading Interface (ETI)

4.8.3 Quote Activation/Inactivation

Quotes of a given session can be activated/inactivated on product scope.

Quotes are inactivated by setting the status “quotes inactive” on the applied scope. In this case the system will hide all inactive quotes from trading. Quote activation is not meant to be used for liquidity taking trading strategies.

When “quotes inactive” is set for a session on a specific scope, none of the quotes of that session for that scope participate in matching nor will they be visible in the order book depth. The trader can continue to add, modify, and cancel individual quote sides for this session and scope, while all these quotes neither participate in matching nor are visible to the market.

The participant may set the status “suspend quotes” (1), “release quotes from suspension” (2), and “suspend and delete quotes” (3) for a session and scope using the Quote Activation Request and specifying *MassActionType* (1373).

Please note that inactivating quotes with the *MassActionType* “Suspend and delete Quotes” (3) will result in quoting inactivated and no quote entry allowed. In this case, all further mass quote requests will be rejected until the quoting will be activated again.

For derivatives markets only: please note that in case the Market Maker Protection mechanism is applied for the session, Quote Activation Requests can only be submitted on the scope of the applied Market Maker Protection parameters.

The status “quotes inactive/quotes active/quotes inactive&delete” is persisted for the current business day. After a system failover, all quotes are cancelled, but the latest status (quote active/quotes inactive/quotes inactive&delete) of a session and scope will remain in place after the failover. At the start of a new business day the default status for all sessions and scopes is “quotes active”.

Note: The processing of the Quote Activation Request (for activation) will be slowed down by the core system. As a consequence, the first-in/first-out principle for a certain instrument of a transaction set including a Quote Activation Request (for activation) is not guaranteed any more.

The processing of the Quote Activation Request (for inactivation) will not be slowed down.

4.8.4 Market Maker Protection - derivatives markets only

A market maker protection mechanism is provided to prevent too many simultaneous executions on quotes provided by a Market Maker.

Market maker protection parameters can be specified for a session on the product scope.

The participant may use the Market Maker Parameter Definition request to define, overwrite or delete market maker protection parameters. To delete market maker protection parameters for a session and scope, all market maker protection parameters must be set to zero. The Inquire Market Maker Parameters request can be used to retrieve the recent market maker protection parameter for a session and product.

Enhanced Trading Interface (ETI)

The Market Maker Parameters are:

- ExposureDuration (1629): The time frame where the market maker protection parameters are counted (sliding time window).
- CumQty (14): Volume counter that counts the total number of traded contracts.
- PctCount (28615): The Percent counter sums up each trade as a percentage of the original volume. Delta (7966): The Delta counter holds for futures the difference of bought future contracts and sold future contracts. For options it is the the difference of (long calls + short puts) and (short calls + long puts).
- Vega (7968): The Vega counter (applicable for options only) holds the absolute number of purchased contracts minus sold contracts.

If a threshold is exceeded then:

- “quotes inactive” is set for the session and scope, i.e. quotes are inactivated on the respective scope,
- the threshold counter will be automatically reset on the respective scope,
- a Quote Activation Notification message (Session Data, retransmittable) for the scope of the threshold counter is sent to the respective session.

4.9 T7 Entry Service (TES)

T7 Entry Services (TES) enables Trading Participants to enter off-book transactions in standardised and tailor-made contracts.

The following TES activities are supported by the T7 interface:

- Enter a TES Trade
- Modify a TES Trade
- Delete a TES Trade
- Approve a TES Trade
- Upload a TES Trade

T7 Entry Services on T7 will support the following TES trade types (trdType(828)):

- Block Trade Service (for derivatives markets only).
- Exchange for Physicals (EFP) Fin which contains a cash reference to specific bonds (for derivatives markets only).

Enhanced Trading Interface (ETI)

Manual – Version 2

18. Mar. 2026

ETI Version 14.1

Page 43 of 77

- Exchange for Physicals (EFP) Index which contains a cash reference to an equity basket (for derivatives markets only).
- Exchange for Swaps (EFS) which contains a cash reference to a swap contract (for derivatives markets only).
- Vola Trade Service which contains a reference to an options off-book (Block TES Trade) trade. On-exchange options trades are not allowed to be used as reference for a Vola trade (for derivatives markets only).
- Trade At Market (TAM) for off-book trades on Total Return Futures (TRF) with custom underlying price (for derivatives markets only).
- OTC (for cash markets only)
- Large in Scale (for cash markets only)

The TES Types defined above are independent from the instrument types and can be made available for a specific instrument type (*ProductComplex(1227)*).

A subscription to the TES Maintenance broadcast stream is needed for the implementation of TES.

4.10 Eurex/Xetra EnLight, the Selective Request for Quote Service (SRQS)

SRQS enables T7 participants to negotiate off-book transactions electronically. A final (agreed) SRQS deal will automatically result in an approved TES trade.

The following SRQS transactions are supported by the T7 interface:

- Open/Update/Delete a SRQS Negotiation (by requester)
- Enter/Modify/Delete a SRQS Quote (by respondent)
- Hit a SRQS Quote (by requester) – resulting in a SRQS Deal
- Update the status of a SRQS Deal (by both, requester and respondent)
- Reject a SRQS Deal (by requester)
- Request For Snapshot (by both, requester and respondent)
- Delete All Quotes Request (by respondent)

A subscription to the SRQS Maintenance broadcast stream is needed for the implementation of SRQS.

4.11 Basket Trading – for derivatives markets only

The trading of a Basket is the synchronized execution of a user-defined group of TES trades. The following transactions are supported by the T7 interface:

- Enter/Modify/Delete/Amend a Basket Trade (by initiator/broker)
- Approve a Basket Trade (by approver - Basket buyer/seller)
- Calendar Roll a Basket Trade by initiator (broker) or approver (Basket buyer/seller)

4.12 Price Validity Checks

There are different price validations for orders and quotes, both considering the most recent best bid and best ask price.

4.12.1 Price Reasonability Check

When entering or replacing an order or quote, the user may opt for a check ensuring that the entered price does not differ significantly from the market. The field *PriceValidityCheckType (28710)* provides the following options:

- Valid value “0” = None
- Valid value “1” = Optional – derivatives markets only
- Valid value “2” = Mandatory

The “optional” differs from the “mandatory” Price Reasonability Check in the following way:

If the best bid and best ask prices are not available or if their spread is not reasonable, an additional reference price (the last traded price or the theoretical price) is taken into account. If the additional reference price is also not available, the incoming order or quote is

- accepted without performing a price validation in case the submitting user chooses “**optional**”, or
- rejected in case the submitting user chooses “**mandatory**” .

4.12.2 Extended Price Range Validation

In case no Price Reasonability Check was performed, the Extended Price Validity Check is applied which ensures that no erroneous price crosses through the market.

For more details please refer to the document T7 Functional Reference.

Enhanced Trading Interface (ETI)

Manual – Version 2

18. Mar. 2026

ETI Version 14.1

Page 45 of 77

4.13 Trade Notifications

4.13.1 Trade Characteristics

If subscribed to the Trade broadcast (see chapter Broadcast), a session will receive Trade Notification messages that confirm each trade for the entire business unit.

Notifications about trades are only provided on the T7 architecture via *Trade Capture Report (AE)* messages. Information provided via *Execution Reports (8, U8)* is indicative only and needs to be confirmed via a *Trade Capture Report (AE)*. For further details see chapter Preliminary Execution Report and Legally Binding Trade Notifications.

T7 will send out the Trade Notification message for each order and quote execution to the trading and clearing business units involved. The receiving clearing business unit may belong to a different participant.

Derivatives markets only: for trades in complex instruments, the Trade Notification message will be generated for each instrument leg executions.

4.13.2 Trade Report Types

The TradeReportType (856) indicates the type of the trade report type.

Scenario	TradeReportType (856)	D*	C*
Final Trade	0 = Trade	X	X
Preliminary Trade	1 = Alleged	X	-
Approved TES Trade	2 = Accept	X	X
Delete TES Trade	3 = Decline	X	X
Amend Basket Trade	4 = Add Endum	X	
Modified Trade	5 = No/Was (Replaced)	X	-
Cancellation of a TES Trade	6 = Trade Report Cancel	X	X
Trade Reversal	7 = (Locked-In) Trade Break	X	X

*D=Derivatives; C=Cash

Enhanced Trading Interface (ETI)

Manual – Version 2

18. Mar. 2026

ETI Version 14.1

Page 46 of 77

Scenario	TradeReportType (856)	D	C*
Submitted TES Trade	11= Alleged New	X	X
Modified TES Trade	13= Alleged No/Was (Replaced)	X	X

4.13.3 Trade Reconciliation

There are several identifiers that can be used to associate an *Execution Report (8)* or a *Quote Execution Report (U8)* with *Trade Capture Reports (AE)* and public trades on the market data interface. Please find an example message flow in the appendix Trade Reconciliation and Identifiers.

Every **match event** with one or more executions (**match steps**) in a simple or complex instrument results in only one *Execution Report (8)* or a *Quote Execution Report (U8)* message for each order or quote respectively. A Trade Notification will then be sent to confirm each trade at each price level. For complex instruments, there is a Trade Notification for each leg execution of the instrument.

Every match step occurring at the exchange has an identifier that is provided in the field *FillMatchID (28708)* in the *Execution Report (8)*, *QuoteEventMatchID (8714)* in the *Quote Execution Report (U8)* and *TrdMatchID (880)* in the Trade Notification. This identifier allows participants to link trade capture reports and the corresponding execution report.

The *TradeID (1003)* field in the Trade Notification in ETI uniquely identifies all order leg allocations referring to the same matching event, simple instrument and price.

For derivatives markets, the *TradeID (1003)* is equivalent to the trade identifier “TrdMatchID” in Eurex Clearing.

For cash markets, there is an additional private key field in the ETI Trade Notification, *SideTradeReportID (1005)*. It uniquely identifies all order allocations referring to the same matching event, instrument and price. The *SideTradeReportID (1005)* is equivalent to the trade identifier *TradeID* in CCP.

The field *SideTradeID (1506)*, which is unique for a product and business day, in the Trade Notification provides the private identifier of an order or quote match step, which can be reconciled with the corresponding *Execution Report (8)* for orders and *Execution Report (U8)* for quotes the following way:

- For order match events in simple instruments, the *Execution Report (8)* message provides the order execution ID on each price level, *FillExecID (1363)*.
- Derivatives markets only: for order match events in complex instruments the *Execution Report (8)* message provides the order execution ID on each price level and additionally the order leg execution ID, *LegExecID (28725)*.
- For quote match events in simple instruments the *Quote Execution Report (U8)* message provides the quote side execution ID on each price level, *QuoteEventExecID (28711)*.

Enhanced Trading Interface (ETI)

Manual – Version 2

18. Mar. 2026

ETI Version 14.1

Page 47 of 77

- Derivatives markets only: for quote match events in complex instruments the *Quote Execution Report (U8)* message provides the quote side execution ID on each price level and additionally the quote side leg execution ID, *LegExecID (28725)*.

Match Reporting	D*	C*	Execution Report (8), (U8)	Trade Notification
Trade event on instrument level: public trade volume reporting	X	X	FillMatchID (28708), QuoteEventMatchID (8714)	TrdMatchID (880)
Identifier for all leg allocations referring to the same simple instrument	X	X		TradeID (1003), OrigTradeID (1126)
Order in simple instrument	X	X	FillExecID (1363)	SideTradeID (1506)
Order in complex instruments	X	-	LegExecID (28725)	SideTradeID (1506)
Quote in simple instrument	X	X	QuoteEventExecID (28711)	SideTradeID (1506)
Quote in complex instrument	X	-	LegExecID (28725)	SideTradeID (1506)

4.14 Cross Request

A cross trade is a trade where a participant trades against an own order in the order book. In a pre-arranged trade, orders from at least two members are executed against each other as previously negotiated.

Participants wanting to consciously enter cross and pre-arranged trades into T7, must precede them with the entry of a cross request or the CLIP Enter Request using *CrossRequestType(28771) = 'Cross Announcement'(1)*.

A trader sends the Cross Request message which is then published via the market data interfaces to all other participants, to alert them of the intention to trade with an own order or to conduct a pre-arranged trade.

The cross request contains the security identification (product and instrument id combination) and the

* D=Derivatives; C= Cash

OrderQty (38), which is mandatory for regulatory reasons. The quantity is valid for both sides of the cross request.

T7 supports both

- the manual approach: a trader sends the Cross Request message which is then published via the market data interfaces to all other participants, to alert them of the intention to trade an own order or to conduct a per-arranged trade. The cross request contains the security identification (product and instrument id combination) and the *OrderQty (38)*, which is mandatory for regulatory reasons. The quantity is valid for both sides of the cross request.
- and, the automated crossing functionality: by using the CLIP Enter Request for crossing, that can be started uni- or bilaterally. The announcement is published automatically, after a waiting time, the T7 automatically creates the crossing orders.

4.15 Request for Quote

The request for quote functionality is used by a trader to ask market makers to enter a quote in a specified instrument. This functionality is supported in the ETI by the Quote Request message. All requests for quote are published via the market data interfaces to all other participants.

Every Quote Request message contains the security identification (product and instrument id combination). *Side (54)* and *OrderQty (38)* are optional attributes.

A Quote Request message might be rejected with an error message indicating a previous request for quote has been already processed recently.

Note: Each request for quote is validated against the available quantities at the best price and the corresponding bid/ask spread in the market. A Reject (3) message might indicate that the bid/ask spread and the quantities in the market are currently sufficient.

For cash markets only, there is more flexibility regarding the publication of requests for quotes. Please refer to the Functional Reference regarding the details.

There is a special work flow for the market model continuous auction with specialist. Please refer to the Functional Reference and the Cash Message Reference documents regarding the details.

4.16 Listener Broadcast

T7 offers 'drop copies' for standard orders (not for lean orders) to sessions within the same business unit. This service is provided on session level; for example each listener session may subscribe to listener broadcast data of one specified session or all sessions of a business unit. The parallel subscription to listener data of more than one session of a business unit is supported.

Listener broadcast data of a Sponsored Access Unit is only accessible to listener sessions of its own Sponsored Access Unit.

The listener broadcast provides information of the complete order history of standard orders of a session and can be retransmitted.

Complete order history means here: all changes to an order happening on the current business day.

Please note that the listener broadcast does not provide trade information.

4.17 News

The News message provides public information from the related market supervision.

This public stream provides a unique sequence number to support retransmission, i.e. news messages are recoverable.

Please note that the retransmission protocol does not include the access to historical news. There is a cut at the end of the business day.

4.18 Risk Control

ETI supports advanced risk protection services. There are the following message formats:

- Derivatives markets only: when a breach on a certain level of risk limits occurs, the participant will be informed via the Risk Notification message.
- Entitlement updates triggered from the Clearing system affecting the business unit are communicated via the Entitlement Notification message.
- Entitlement updates triggered within the Trading system (GUI) affecting the business unit or the trader are communicated via the Party Action Report message.
- Legal text messages in case of suspension from trading will be provided via the Legal Notification message.

This private stream is automatically sent to each session of the corresponding business unit and clearing unit, no subscription mechanism is supported.

Each Risk Control broadcast message provides a unique sequence number and can be retransmitted.

Please note that the retransmission protocol does not include the access to historical Risk Notification messages. There is a cut at the end of the business day.

4.19 Service Availability – partition scope

The Service Availability message provides information on the availability of all services on different partitions from a certain gateway point of view. Retransmission is not supported for this stream, i.e. service availability messages are not recoverable.

Please be aware that the service availability indicates only which services are available by the ETI gateway the ETI client interacts with.

Subscription is handled via the Subscribe message. As filter criteria for subscription a single partition or all partitions may be specified. The Subscribe Response message confirms the subscription followed by Service Availability messages providing the current status of all services on all partitions. Any status change of a service would then be communicated via a new Service Availability message.

The following five services reside on a partition:

- *MatchingEngineStatus (25005)*: Order/Quote Management service - informs if trading is active for a grouping of T7 products.
- *TradeManagerStatus (25006)*: Trades service - informs about the availability of the retransmission service of trades for a grouping of T7 products.
- *AppSeqStatus (28732)*: Retransmission of Order/Quote Events service - informs about the availability of the retransmission services for order and quote events (session data and listener data) for a grouping of T7 products.
- *TradeEntryServiceStatus (25048)*: T7 Entry Service informs if T7 Entry Service is active for a grouping of T7 products.
- *TradeEntryServiceRtmStatus (25050)*: informs about the availability of the retransmission service for T7 entry service data for a grouping of T7 products.

In addition to the (availability) status, the current business day of the related service is provided. The business day defines the visibility scope for retransmission data. Only data related to the current business day can be requested for retransmission.

The ETI Gateway rejects requests if their target service is not available on the respective partition. If a request has no target service, the request processing is independent of the published service states.

If a certain service on one or even on all partitions becomes unavailable, the system will

- NOT logout any user
- NOT logout any session
- NOT cancel any subscription
- NOT delete any orders (persistent or non-persistent) or quotes

4.20 Service Availability – market scope

In addition the Service Availability service with partition scope (see chapter 4.19) there is a Service Availability service with market scope. The provided system/interface behaviour is comparable.

The following services are provided:

- SelectiveRequestForQuoteServiceStatus (25051),
- SelectiveRequestForQuoteRtmServiceStatus (25053),
- NewsRtmServiceStatus (25237),
- RiskControlRtmServiceStatus (25238).

4.21 Mass Cancellation Notification

An mass cancellation notification is not provided on a single order or quote level. The FIX message format *OrderMassActionReport (BZ)* message is used for responses and notifications. The owning session will be informed about the scope of the cancellation by a summary record. The summary record will also provide the entering parties involved and the reason for the mass cancellation.

Orders that couldn't be cancelled due to an incompatible instrument state are provided with their Client Order ID (*NotAffOrigClOrdID (1372)*) and Exchange Order ID (*NotAffectedOrderID (1371)*) in the `<NotAffectedOrdersGrp>`.

For cash markets only: all deleted persistent orders are provided with their Client Order ID (*AffectedOrigClOrdID (1824)*) and Exchange Order ID (*AffectedOrderID (535)*) in the `<AffectedOrdersGrp>`.

Instruments where quotes couldn't be cancelled due to an incompatible instrument state are provided with their Instrument ID (*NotAffectedSecurityID (28702)*) in the `<NotAffectedSecuritiesGrp>`.

4.22 Mass Cancellation Events

T7 informs additionally about events that implicitly led to the mass cancellation of orders or quotes via the Mass Cancellation Event message. Persistent and non-persistent orders are the deleted for the following events depending on the value of *ExecInst (18)*: no value – no order cancellation, 1 – cancellation of persistent orders, 2 – cancellation of non-persistent orders, 3 - cancellation of both, non-persistent and persistent orders. Quotes are always deleted for all of the following events:

- product holiday
- product halt
- instrument suspension

Enhanced Trading Interface (ETI)

Manual – Version 2

18. Mar. 2026

ETI Version 14.1

Page 52 of 77

- strategy cancellation (derivatives markets only)
- volatility interruption product level (derivatives markets only)
- volatility interruption – instrument level (derivatives markets only)
- product temporarily not trade-able
- instrument stop (cash markets only)

Derivatives markets only: there is no notification for the cancellation of orders and quotes during the end-of-day processing.

For instrument suspension, instrument knock out, and instrument knock out reverted there is one

- Order Mass Cancellation Notification for orders (for cash markets only), and one
- Mass Cancellation Event for quotes (for cash and derivatives markets).

4.23 Trading Session Events

Trading session events triggered by the T7 architecture are communicated to **all** trading and listener sessions via the Trading Session Event message. It is part of the session data stream and the listener data stream, regardless if orders or quotes were entered for a product by the session.

Trading session events might imply mass cancellation events, where no explicit mass cancellation notifications are provided; for details see the following table:

Trading Session Event	Level	Persistent Orders	Non-persistent Orders	Quotes
Start of Service	Partition	No	Yes	Yes
Market Reset	Partition	No	Yes	Yes
End of Restatement	Product	N/A	N/A	N/A
End of Service	Partition	No	Yes	Yes
Service Resumed	Product	N/A	N/A	N/A

For all Trading Session Event messages to be sent out on Partition level (see above) the field MarketSegmentId is not set.

Enhanced Trading Interface (ETI)

4.24 Timestamps

All ETI timestamps will provide date and time, in UTC, represented as nanoseconds past the UNIX epoch (00:00:00 UTC on 1 January 1970).

ETI provides the following timestamp information:

Timestamp	FIX field	Description
Transaction timestamp	ExecID (17), MassActionReportID (1369), QuoteResponseID (693), SecurityResponseID (322), MMPParameterReportID (28717)	Taken when a transaction is functionally processed and used as a unique message identifier per product for messages sent by ETI. ExecID (17) maps to MDEntryTime (273) in EMDI for order and quote events.
Entry timestamp	TrdRegTSEntryTime (21009)	Time of the creation of the order. It will be set when an order is received and processed by the Matching Engine. This timestamp is only provided for Standard Orders.
Priority timestamp	TrdRegTSTimePriority (21008)	Is initially set to the entry timestamp and then gets re-stamped when the order loses time priority, see chapter Modification. This timestamp is only provided for Standard Orders.
Creation timestamp	LastUpdateTime (779), OrigTime (42)	Creation Time of a strategy, respectively of market supervision News.
Gateway request in	RequestTime (5979)	Provides the time the T7 application has read an inbound message on a gateway from the TCP socket.
Gateway response in	ResponseIn(7765)	Provides the time the T7 application has received an inbound response message on a gateway from a matching engine.
Gateway response out	SendingTime (52)	Provides the time the T7 application has written an outbound message on a gateway to the TCP socket.
Matching engine in	TrdRegTSTimeIn (21002)	Provides the time the T7 application has received an inbound message on a matching engine.

Enhanced Trading Interface (ETI)

Manual – Version 2

18. Mar. 2026

ETI Version 14.1

Page 54 of 77

Timestamp	FIX field	Description
Matching engine out	TrdRegTSTimeOut (21003)	Provides the time the T7 application has sent an outbound message from a matching engine.
Gateway notification in	NotificationIn(25043)	Provides the time the T7 application has received an inbound notification message on a gateway from a matching engine.

5. Connectivity and Session Parameters

5.1 Connectivity Options

The ETI interface provides two connectivity options. In addition to the existing (plain text payload) connections via the familiar port, the ETI interface also provides TLS encrypted payload connections for its LF sessions via a dedicated TLS port (see Network Access Guide). After the TCP connect to the TLS port, a TLS handshake has to be initiated by the client and the following communication is then TLS encrypted. Please refer to the Network Access Guide for the list of supported cipher-suites.

The session and application layer is not affected. A LF session can only be logged in once (either plain text or TLS encrypted payload) at the same point in time.

To verify the ETI LF (gateway) server certificate, the client has to deploy DigiCert root certificates into its trust store.

The server certificate is signed by a DigiCert intermediate certificate, which is provided by the server together with its own certificate during the TLS handshake.

5.2 Session Concept

The ETI interface is a session oriented interface whereby the session is the basic scope of the interaction with the T7 architecture. Several users may share a single session, but every session may only be instantiated once.

The receiver of the direct response to a request sent to the gateway is always the submitting session. Additionally the session is informed about system events and all unsolicited messages referring to status changes of orders and quotes belonging to that session.

The ETI interface will supports three session types: low frequency sessions for regular trading, low frequency session for back office, and high frequency session.

The following table provides an overview on the functionality supported by the different session types:

Functionality	D*	C*	Low Frequency Session (LF) – Regular Trading	Low Frequency Session (LF) – Back Office	High Frequency Session (HF)
Standard Order	X	X	Yes	No	Yes
Lean Order	X	X	Yes	No	Yes
Persistent Order	X	X	Yes	No	Yes

*D=Derivatives; C=Cash

Enhanced Trading Interface (ETI)

Manual – Version 2

18. Mar. 2026

ETI Version 14.1

Page 56 of 77

Functionality	D	C*	Low Frequency Session (LF) – Regular Trading	Low Frequency Session (LF) – Back Office	High Frequency Session (HF)
Non-persistent Order	X	X	Yes	No	Yes
Order Book Restatement	X	X	Yes	Yes	Yes
Short Order Message Layouts	X	X	Yes	No	Yes
Quotes	X	X	Yes	No	Yes
Maintaining orders of another session (same business unit)	X	X	Yes	No	Yes ²
Maintaining quotes of another session (same business unit) ³	X	X	Yes	No	Yes
Listener Broadcast	X	X	Yes	Yes	No
Trade Broadcast	X	X	Yes	Yes	No
Trade Reversals	X	X	Yes ⁴	Yes	No
News Broadcast	X	X	Yes	Yes	No
Risk Control Broadcast	X	X	Yes	Yes	Yes
TES Maintenance Broadcast	X	X	Yes	Yes	No
TES Trade Broadcast	X	X	Yes	Yes	No
SRQS Maintenance Broadcast	X	X	Yes	Yes	No
SRQS	X	X	Yes	No	No
Market Maker Parameter request for the own session	X	-	Yes	No	Yes

2 Only Order Mass Cancellation and Cancel Order Single are supported via HF sessions.

3 Only QuoteActivation and Quote Mass Cancellation are supported via both, LF and HF session.

4 Trade Reversals are part of the Trade Broadcast.

Enhanced Trading Interface (ETI)

Manual – Version 2

18. Mar. 2026

ETI Version 14.1

Page 57 of 77

Functionality	D	C*	Low Frequency Session (LF) – Regular Trading	Low Frequency Session (LF) – Back Office	High Frequency Session (HF)
Market Maker Parameter request for another session	X	-	Yes	No	No
Service Availability Broadcast	X	X	Yes	Yes	Yes
Session List Inquire	X	X	Yes	Yes	No
User List Inquire	X	X	Yes	Yes	Yes
User Logon	X	X	Yes	No	Yes
Trade Enrichment List	X	X	Yes	Yes	Yes
Request for Quote	X	X	Yes	No	Yes
Cross Request	X	X	Yes	No	Yes
TES trading	X	X	Yes	No	No
CLIP	X	-	Yes	No	Yes
Pre-Trade Risk Limits	X	-	Yes	No	No
Basket Trading	X	-	Yes	No	No
Specialist Model	-	X	Yes	No	No

5.2.1 Low Frequency Session (LF) – Regular Trading

This session type supports the complete ETI functionality.

Modification for another session of the same business unit is only supported for standard orders.

A LF session may also be used to subscribe broadcast streams, for example: Listener broadcast, trade notifications.

5.2.2 Low Frequency Session (LF) – Back Office

This session type supports only a subset of the Regular Trading Low Frequency Sessions. Please refer to the table above for the details.

Enhanced Trading Interface (ETI)

Manual – Version 2

18. Mar. 2026

ETI Version 14.1

Page 58 of 77

5.2.3 High Frequency Session (HF)

This session type is aimed at high frequency trading.

The HF session type does not support the subscription of the broadcasts listener, trades, and news.

Mass cancellation and quote activation/inactivation for another session is supported.

5.3 Identification and Authentication

ETI has a two-step logon procedure, with a Session Logon at any available gateway and followed by one or multiple User Logon messages.

5.3.1 Session Authentication

At first the participant must establish a TCP/IP connection to any available Gateway. The IP addresses and port numbers are provided by the exchange via the Network Access Guide.

Once that connection is established, the participant sends a Session Logon message authenticating the ETI session.

The gateway will validate *PartyIDSessionID (20055)* and *Password (554)*, which are parameters provided by the exchange. A successful logon will initiate a T7 ETI session.

Note: The Session Logon message is not used to log on and authenticate a user on T7.

The following messages may be sent on a session without any authenticated trader:

- Session logon/logout
- Heartbeat messages
- Subscription and unsubscription of broadcasts
- Retransmission of recoverable data
- Trader authentication
- Session List inquire
- User List Inquire
- Trade Enrichment List Inquire

All other requests must be submitted with an authenticated trader name in the *SenderSubID (50)* of the message header.

Enhanced Trading Interface (ETI)

5.3.2 User Authentication

The User Logon message identifies and authenticates a qualified user establishing access to the T7 architecture. A ETI session may be shared by several users belonging to the same business unit.

The participant must provide the binary **User ID** in the *Username (553)* field, and the corresponding password in the *Password (554)* field.

A successful user logon will grant the user access to the trading system.

All further transactions that require a user scope from the session are validated in the gateway against an authenticated User ID, i.e. *SenderSubID (50)* in the message header.

Users may logon to the T7 architecture via all sessions of their business unit – even at the same time.

Multiple User Logon messages for a user via the same session are rejected.

Note: ETI uses binary identifiers for users (User ID) and business units (Business Unit ID). A mapping to the current Member (Business Unit Short Name) and Trader ID (User Login Name) is available in the Admin GUI.

5.3.3 Password Encryption

There is an additional login option for both, sessions (the *Session Logon (Password encrypted)* message) and users (the *User Logon (Password encrypted)* message). The password padded with the current UTC timestamp, encrypted with T7's public RSA key, and base64 encoded must be provided by the participant in the *EncryptedPassword (1402)* field.

The new login options are intended to be used for HF sessions. Please note, that for a given session all users must be logged in with the login option used for the that session login. I.e., if a particular session is logged in using *Session Logon (Password encrypted)*, all users using that session must be logged in using *User Logon (Password encrypted)*.

EncryptedPassword (1402)

For security reasons, for both passwords, the session and the user password, the participant is expected to append the login time (in UTC format YYYYMMDDHHMMSS) to the password before encryption. T7 will extract this login time from the decrypted password and validate it.

The extended password must then be encrypted using T7's public RSA key. The padding scheme **OAEP** (Optimal Asymmetric Encryption Padding), the mask generation function **MGF1** and the hash function **SHA256** must be used.

The binary output of the RSA encryption (in big endian format) must then be converted to an alphanumeric value using the standard base-64 encoding. Please refer to <http://en.wikipedia.org/wiki/Base64> for details.

Finally, this alphanumeric value must be entered into the *EncryptedPassword* field (1402).

Enhanced Trading Interface (ETI)**PublicKey (25233), LatestPublicKeySeqNo (25243)**

T7 implements the support for (infrequent) RSA key changes by associating an ascending sequence number with each public T7 RSA key. The most recent two are always supported. Please refer to the Network Access Guide for details of where to obtain the latest public key and how to update it.

In addition the *Session Logon Response* message provides the latest pair of public key (*PublicKey*, tag 25233) and associated sequence number (*LatestPublicKeySeqNo*, tag 25243).

5.4 Failover

In the event of a network connection failure, active ETI sessions will be disconnected from the gateway. There will be no automatic session failover if a connection to the gateway is lost.

In the event of a ETI gateway failure, active sessions will be disconnected.

If the active ETI session is ever disconnected, for any reason, the participant application must establish a TCP/IP connection to any available Gateway and send a Session Logon message.

Please note, that quotes and non-persistent orders (both, lean and standard ones) are automatically deleted in such cases.

5.5 Throughput Limits

HF and LF sessions can differ in the number of requests per time interval allowed.

A participant application may send multiple messages without waiting for a response. However, the number of messages allowed within a given timeframe is limited by the use of throttles.

The limits are configured by the T7 architecture for each session type, and are provided to the participant application in the Session Logon Response message.

The limit parameters are upper limits and do not guarantee throughput rates. As loads fluctuate in the exchange system, actual throughput rates can vary.

The mechanism uses three components:

- Transaction limit
- Reject/disconnect limit
- Time interval

Enhanced Trading Interface (ETI)

5.5.1 Transaction Limit

The transaction limit is the maximum number of messages that a participant application may send within a configured time interval without getting rejected (sliding window approach).

If a participant application exceeds the threshold “number of transactions per time interval”, the exceeding request will be rejected and not queued. The unit of the time interval is milliseconds.

Required heartbeats do not count against the transaction limit.

For example, a transaction limit of 200 messages per second could be represented in the Logon (A) response message as:

- ThrottleNoMsgs (1613) = 200
- ThrottleTimeInterval (1614) = 1000

5.5.2 Reject/Disconnect Limit

The purpose of the Reject/Disconnect Limit is to protect the gateway from large amounts of invalid data. It defines the maximum number of sequential message rejects due to the violation of the transaction limit allowed by ETI.

Once an acknowledgement has been sent, the reject/disconnect limit counter is reset to zero.

If the participant application continues to send messages which are rejected for exceeding the transaction limit and the reject/disconnect limit is exceeded, ETI will disconnect the session.

For example, a disconnect limit of 500 rejects is represented in the Logon (A) response message as:

ThrottleRejectNoMsg (25002) = 500

5.6 Mass Cancellation on Disconnect

Quotes and non-persistent orders are automatically cancelled on session disconnect.

In case of a session loss or a session logout the following messages will be generated for all products where the Matching Engine cancelled non-persistent orders (either lean or standard orders) and/or quotes of the lost session:

- Order Mass Cancellation Notification (retransmittable, via listener broadcast and session data) for cancelled non-persistent orders (MassActionReason (28721): 6 = “Session Loss”). Potentially followed-up by Cancel Order Notification messages for each order of <NotAffectedOrdersGrp>
- Quote Mass Cancellation Notification (non-retransmittable, via session data) for cancelled quotes (MassActionReason (28721): 6 = “Session Loss”). Potentially followed-up by Quote Execution Notification (retransmittable, via session data) messages for each quote on an instrument in <NotAffectedSecuritiesGrp> that could not be cancelled due to an incompatible instrument state.

Enhanced Trading Interface (ETI)

5.7 Mass Cancellation on Duplicate Session Login

Quotes and non-persistent orders of a session are automatically cancelled if the session tries to login again via a new connection to a gateway.

In such a scenario, the already logged in session stays logged in while the second session login (via a different connection) is rejected. The following messages will be generated for all products where the Matching Engine cancelled non-persistent orders (either lean or standard orders) and/or quotes of the session:

- Order Mass Cancellation Notification (retransmittable, via listener broadcast and session data) for cancelled non-persistent orders (MassActionReason (28721): 7="Duplicate Session Login"). Potentially followed-up by Cancel Order Notification messages for each order of <NotAffectedOrdersGrp> that could not be cancelled due to an incompatible instrument state.
- Quote Mass Cancellation Notification (non-retransmittable, via listener broadcast) for cancelled quotes (MassActionReason (28721): 7="Duplicate Session Login"). Potentially followed-up by Quote Execution Notification (retransmittable, via session data) messages for each quote on an instrument in <NotAffectedSecuritiesGrp> that could not be cancelled due to an incompatible instrument state.

6. Session Layer

The ETI interface uses a proprietary session layer. ETI follows FIX 5.0 semantics; however the message headers and trailers have been modified to improve efficiency.

Each message in ETI has a unique numeric *TemplateID* (28500) assigned to it in addition to the standard FIX *MsgType* (35) information provided in the header.

ETI will echo the participant's *MsgSeqNum* (34) of the request header in the corresponding response header.

6.1 Flat Binary Encoding

ETI messages have a defined order of fixed-length fields and arrays of fixed-length elements. ETI avoids string fields wherever possible.

The arrays (repeating groups) consist of a counter (FIX NoXXX fields, indicating the number of array elements) and their fixed-length elements. In general, repeating groups are at the end of the ETI messages.

Binary values are presented in little endian byte order.

The length of ETI messages (*BodyLen* (9)) sent by the ETI gateway is always set to a multiple of 8. If there is a variable size string at the end of a message, the message is "filled up" with binary zeroes.

Optional fields need to be initialized with no values

Padding bytes required for proper alignment do not need to be initialized.

6.2 Logon

The participant application needs to open a TCP/IP connection to T7 during start-up.

The first message to be sent on the connection must be the Session Logon message.

If the Session Logon message is not sent within a certain time interval, the connection will be closed by the T7 architecture.

If the session logon fails, no further logon attempts will be accepted on that TCP connection. The application must drop the TCP session and establish a new TCP connection.

6.3 Logout

The participant may log out the session using the Session Logout message.

Enhanced Trading Interface (ETI)

Manual – Version 2

18. Mar. 2026

ETI Version 14.1

Page 64 of 77

ETI will automatically drop a session if:

- The TCP/IP session is disconnected.
- If three consecutive heartbeats are missed or on receipt of too many Heartbeats
- If throttle reject/disconnect limit is exceeded.
- In case of severe protocol errors.

After a successful session logout, the participant should shut down the connection and close the socket.

The system will perform a forced logout overnight after which time the participant may log back in.

6.4 Heartbeat

The HeartBtInt (108) must be specified by the participant in the Session Logon message. This parameter specifies the period in which ETI sends heartbeats to the participant and the interval ETI checks for request messages from the application.

The Heartbeat message should be sent by the participant if no other message has been processed during the defined HeartBtInt (108) interval. It is used by the ETI gateway to monitor the status of the communication link to the ETI client during periods of inactivity.

A heartbeat interval of zero indicates that ETI will not take any action for missed heartbeats. This setting can only be used on test systems.

The minimum value is 100 milliseconds in the production system. The upper limit is 60 seconds.

If the field is not supplied, then ETI will use a default value. The applied heartbeat interval is provided in the Session Logon Response.

Note: Heartbeats do not count against any of the throttle counters. Anyhow, a session sending too many heartbeats is disconnected by the system.

The Heartbeat Notification is sent by ETI based on the heartbeat interval, regardless if the participant application sends Heartbeat messages or not. It may be used by the ETI client to monitor the status of the communication link to the ETI gateway during periods of inactivity.

6.5 Reject

All rejections and errors on the application and session level are communicated via the FIX standard Reject (3) message; i.e. none of the fields in the request message other than *MsgSeqNum* (34) will be echoed.

6.6 Message Sequence Number

The MsgSeqNum (34) in the request header must increment with each message sent by the participant to the gateway, starting with the Session Logon message as sequence number 1.

ETI will echo the participant's MsgSeqNum (34) of the request header in the corresponding response header.

In case of any unexpected sequence numbers, sequence number gaps, or duplicate sequence numbers, the request message will be rejected with a sequence number error, and the session will be disconnected.

Note: There is no recovery mechanism for message sequence numbers in ETI. All participant connections (including a reconnection after a disconnection) are considered “new,” and all Session Logon requests are expected to contain the message sequence number 1.

6.7 Application Message Sequencing

6.7.1 Application Message Identifier

All recoverable session and listener data sent by ETI will provide an application message identifier, ApplMsgID (28704), to uniquely identify order and quote related data sent by the gateway.

With the help of the application message identifier, the participant is able to ask for a retransmission of recoverable order/quote data.

The same application message identifier is also provided in the Listener Broadcast (standard order drop copy).

The ApplMsgID (28704) has the following characteristics:

- It is unique per partition and business day.
- It is ascending during a business day until end-of-stream – per broadcast type (either, session or listen data) and scope (session), i.e., ordering (of ApplMsgID) is not guaranteed across broadcast types and/or sessions.
- Gap detection is not possible.
- It does not start at any particular number.

Consists of 16 bytes, ordered with the highest significant byte first (as in big endian).

Memory comparison functions such as memcmp() can be used to compare two Application Message Identifiers:

- Two Application Message Identifiers ApplMsgID1 and ApplMsgID2 are equal, if the character array of size 16 of ApplMsgID1 and ApplMsgID2 are equal at all positions.

Enhanced Trading Interface (ETI)

- The ApplMsgID1 is greater than ApplMsgID2, if at the first differing position *i*, the corresponding character ApplMsgID1[*i*] is greater than ApplMsgID2[*i*].
- The ApplMsgID1 is less than ApplMsgID2, if at the first differing position *i*, the corresponding character ApplMsgID1[*i*] is less than ApplMsgID2[*i*].

6.7.2 Application Message Sequence Number

ETI will assign an application message sequence number, the *AppSeqNum (1181)*, to messages related to Trade Notification, News, Risk Control (Risk Notification and Entitlement Notification), TES Trade/Maintenance and SRQS Maintenance.

The *AppSeqNum (1181)* has the following characteristics:

- The first message will be the message sequence number 1.
- It is ascending during a business day until end-of-stream (Trade Notification).
- The message sequence will be gap-less and allows gap detection.
- Trade notification: unique per business day, partition, and business unit.
- News: unique per market.
- Risk Control: unique per business unit.
- TES Trade/Maintenance notification: unique per business day, partition, and business unit.
- SRQS Maintenance notification: unique per business day, and business unit.

6.8 Session Data

Each session receives information on orders and quotes which were entered in their own session automatically without any subscription. The Session Data include Trading Session Event messages: start of service, market reset, end of restatement, and end of service.

For standard orders the complete order history may be recovered.

For lean orders and quotes only match events in the session scope may be recovered.

Session Data are recoverable, if and only if they have an *AppMsgId (28704)*.

The complete history for standard orders is distributed via the listener broadcast, too. In these cases, both messages for (session and listener data) will have the same *AppMsgId (28704)*.

Note: The retransmission message template used for order and quote events may differ from the session data response template. For more details, please refer to chapter Retransmit Response (Order/Quote Event).

Enhanced Trading Interface (ETI)

Manual – Version 2

18. Mar. 2026

ETI Version 14.1

Page 67 of 77

6.9 Broadcast

A broadcast is an application message that is available to multiple sessions, such as Trades or News messages.

Sessions may receive the following broadcast types:

Broadcast	D*	C*	FIX Message Type	Application Identifier (1355)	Broadcast Message Identifier
Listener: complete order history of standard orders of a session	X	X	Execution Report (8), Trading Session Status (h), Order Mass Action Report (BZ)	5	AppMsgID (28704)
Trades: Trade data on business unit level	X	X	Trade Capture Report (AE)	1	AppSeqNum (1181)
News: Public general messages from market supervision	X	X	News (B)	2	AppSeqNum (1181)
Risk Control: Private risk control messages	X	X	Party Risk Limits Update Report (CR), Party Entitlements Update Report (CZ)	6	AppSeqNum (1181)
Service Availability: Provides information on the availability of service on a partition	X	X	User Notification (CB)	3	N/A
Service Availability Market: Provides information on the availability of service on a market	X	X	User Notification (CB)	10	N/A

*D=Derivatives; C=Cash

Enhanced Trading Interface (ETI)

Manual – Version 2

18. Mar. 2026

ETI Version 14.1

Page 68 of 77

Broadcast	D	C*	FIX Message Type	Application Identifier (1355)	Broadcast Message Identifier
SRQS Maintenance: SRQS data on business unit level	X	X	Trade Capture Report (AE) Quote Request (R)	9	ApplSeqNum (1181)
TES Maintenance: complete history of TES (enter, approve, modify, delete) excluding the TES trade data on business unit level.	X	X	Trade Capture Report (AE)	7	ApplSeqNum (1181)
TES Trade: TES trade data on business unit level	X	X	Trade Capture Report (AE)	8	ApplSeqNum (1181)
Specialist Data: all required information for maintaining the specialist orderbook. i.e., all order data for the instruments the specialist is assigned to	-	X	Execution Report (8), Trading Session Status (h), Order Mass Action Report (BZ)	11	ApplMsgID (28704)

After a session is established, it is not subscribed to any broadcast, but the risk control broadcast; nevertheless unsolicited session data is received.

For broadcast subscription, the Subscribe message is used. Per request only one broadcast type, via *RefAppIID (1355)*, may be subscribed. The response provides a unique subscription identifier in *AppSubID (28727)*.

For broadcast unsubscription, the Unsubscribe message is used. Per request only one subscription, via *RefAppSubID (28728)*, may be unsubscribed.

The following tables shows the results of different subscriptions:

Enhanced Trading Interface (ETI)

Manual – Version 2

18. Mar. 2026

ETI Version 14.1

Page 69 of 77

RefAppID (1355)	D*	C*	SubscriptionScope (25001)	Result
Trade (1)	X	X	0xFFFFFFFF (no value)	All trade data for the own business unit.
News (2)	X	X	0xFFFFFFFF (no value)	All public general messages from the market supervision of the specified market.
Service Availability (3)	X	X	Partition ID	Availability of the services provided by the specified partition.
Service Availability (3)	X	X	0xFFFFFFFF (no value)	Availability of the services provided by all known partitions.
Listener Data (5)	X	X	Session ID	Complete history of standard orders (of the current business day) submitted via the specified session.
Listener Data (5)	X	X	0xFFFFFFFF (no value)	Complete history of standard orders (of the current business day) of the own business unit.
TES Maintenance (7)	X	X	0xFFFFFFFF (no value)	Complete history of TES data (of the current business day) of the own business unit.
TES Trades (8)	X	X	0xFFFFFFFF (no value)	All TES trade data of the own business unit.
Service Availability Market (10)	X	X	0xFFFFFFFF (no value)	Availability of the services provides by the own market.
SRQS Maintenance (9)	X	X	0xFFFFFFFF (no value)	All SRQS data of the own business unit.

Enhanced Trading Interface (ETI)

Manual – Version 2

18. Mar. 2026

ETI Version 14.1

Page 70 of 77

RefAppID (1355)	D	C*	SubscriptionScope (25001)	Result
Specialist Data (11)	-	X	0xFFFFFFFF (no value)	All order management data for the instruments the Business Unit of the specialist is assigned to.

Note: Broadcasts may only be subscribed by LF sessions with the exception of service availability, which are available on HF and LF sessions. The receipt of the risk control broadcast is required by the regulator for all sessions; therefore no subscription is needed.

Please be aware that the subscription to any broadcast type might result in getting out-dated data. The customer application needs to handle that situation.

The FIX Application Sequencing concept⁵ is used for broadcasts on ETI:

- Each broadcast type is assigned a unique *AppID (1180)*.
- Application-level messages are uniquely identified using a combination of *AppID (1180)* and *AppSeqNum (1181)* or *AppID (1180)* and *AppMsgID (28704)* respectively.

6.10 Recovery

6.10.1 Retransmission

Retransmission is supported for recoverable session data and the broadcast types listener, trades, news, risk control, TES trades/maintenance, and SRQS maintenance.

The *PartitionID (5948)* is a mandatory parameter for all retransmission requests for all broadcast types except News, Risk Control, and SRQS Maintenance. The *PartitionID (5948)* is unused for News, Risk Control and SRQS maintenance.

For retransmission, the Retransmit and Retransmit (Order/Quote Event) message respectively is used.

With a retransmission request, only data in the scope of one broadcast type and partition can be requested via *RefAppID (1355)* and *PartitionID (5948)*.

Retransmission of a Sponsored Access Unit can be only processed by its own Sponsored Access Unit.

The FIX application level recovery concept can be used by the participant for selective recovery and late start restatements:

⁵ See FIX 5.0 SP2 Specification, Vol.1

Enhanced Trading Interface (ETI)

Manual – Version 2

18. Mar. 2026

ETI Version 14.1

Page 71 of 77

Recoverable Data	D*	C*	Scope	Application Message Sequencing	Application Identifier RefAppID (1355)	Retransmission Sequencing
Recoverable session data	X	X	No value	AppMsgID (28704)	4	AppBegMsgID (28718), AppEndMsgID (28719)
Listener broadcast (standard order drop copy)	X	X	session ⁶	AppMsgID (28704)	5	AppBegMsgID (28718), AppEndMsgID (28719)
Trades	X	X	N/a	AppSeqNum (1181)	1	AppBegSeqNum (1182), AppEndSeqNum (1183)
News	X	X	N/a	AppSeqNum (1181)	2	AppBegSeqNum (1182), AppEndSeqNum (1183)
Risk Control	X	X	N/a	AppSeqNum (1181)	6	AppBegSeqNum (1182), AppEndSeqNum (1183)
TES Maintenance	X	X	N/a	AppSeqNum (1181)	7	AppBegSeqNum (1182), AppEndSeqNum (1183)
TES Trade	X	X	N/a	AppSeqNum (1181)	8	AppBegSeqNum (1182), AppEndSeqNum (1183)
SRQS Maintenance	X	X	N/a	AppSeqNum (1181)	9	AppBegSeqNum (1182), AppEndSeqNum (1183)
Specialist Data	-	X	N/a	AppMsgID (28704)	11	AppBegMsgID (28718), AppEndMsgID (28719)

Optionally, the application message identifiers and respectively the application message sequence numbers provide the retransmission sequencing range. If no start value is specified, it is assumed to be “1”. If ending range is absent, it is assumed to be infinity (“all available messages”).

*D=Derivatives; C= Cash

6 Retransmission of listener broadcast data must be requested for each session separately. No session wildcard processing is supported for retransmission.

Enhanced Trading Interface (ETI)

Manual – Version 2

18. Mar. 2026

ETI Version 14.1

Page 72 of 77

The retransmission response will provide the range of recovered order and quote data in the fields *ApplBegMsgID (28718)* and *ApplEndMsgID (28719)* and for all other broadcasts respectively in the fields *ApplBegSeqNum (1182)* and *ApplEndSeqNum (1183)*.

This range may differ from the requested range, i.e. further retransmission requests may need to be submitted.

If you specify *ApplBegSeqNum (1182)* with no value in your retransmit request, you may receive old Risk Control/News messages in your retransmit response, where the data relates to a trading day from the past.

Please check the value of the field

- *OrigTime (42)* in case of *News (TemplateID 10031)*,
- *TradeDate (75)* in case of *Entitlement Notification (10034)*, *Risk Notification (10033)* and *Party Action Report (10042)*.

This value indicates the date when either the respective risk data event has occurred or the respective news has been created and can therefore be used as a filter.

6.10.2 Preliminary Execution Report and Legally Binding Trade Notifications

All order and quote response information in ETI is sent out immediately after the order and quote has been processed by the core matching process.

All order and quote response information in ETI is preliminary; this includes *Execution Reports (8)* sent out for persistent and non-persistent orders as well as *Quote Execution Reports (U8)* sent out for quotes.

Note: Market data on T7 is based on order and quote execution information. The MDI, EMDI and EOBI interfaces provide trade price messages on the basis of this preliminary information.

For these reasons, a participant application always needs to confirm the preliminary execution information with the corresponding legally binding Trade Notification message (*Trade Capture Report (AE)*).

In case of an exchange system failure, the participant is informed of a market reset event via the Trading Session Event message. This message is followed by an order book restatement of all active orders.

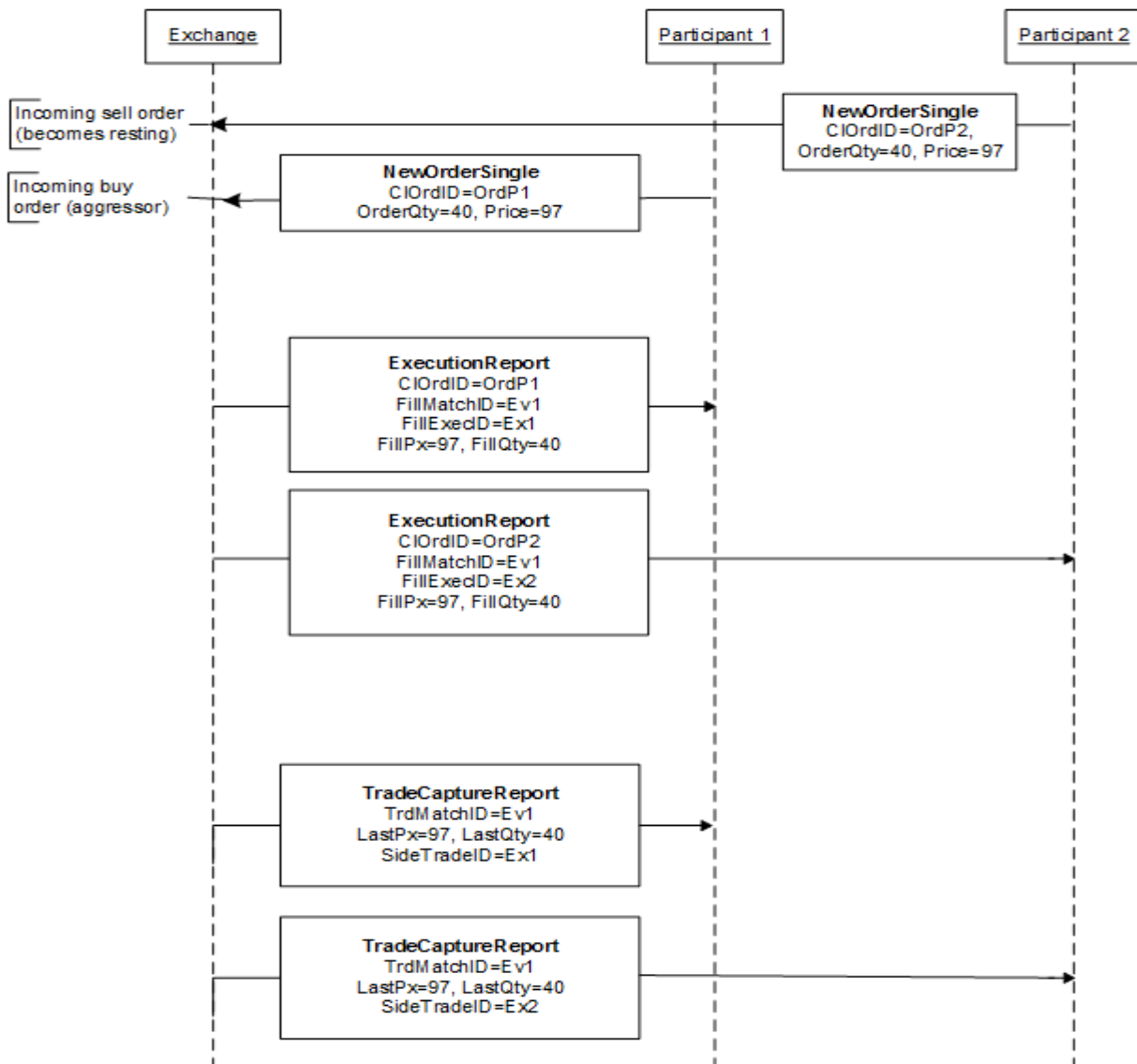
In this event it is highly recommended to reconcile all *Execution Reports (8, U8)* with the corresponding *Trade Capture Reports (AE)*. If there is no *Trade Capture Report (AE)* for a given *Execution Report (8)* or a *Quote Execution Report (U8)* then this *Execution Report (8)* or a *Quote Execution Report (U8)* has to be considered invalid and should be discarded. Please find detailed information regarding trade reconciliation in chapter Trade Reconciliation.

Enhanced Trading Interface (ETI)

7. Appendix

7.1 Trade Reconciliation and Identifiers

The following message flow shows a match event of an incoming aggressively matching order against one resting order in the book. Please refer to chapter 4.13.3 for more details. The focus of this message flow is to show, how trade reconciliation is based on the different execution and trade identifiers. Please note: there might be more than one TradeCaptureReport per ExecutionReport with the same SideTradeID for instruments with trade logic.



Enhanced Trading Interface (ETI)

7.2 Uniqueness of Identifiers

The following table documents the criteria required for uniqueness of IDs.

Tag	Field Name	Description	Source	Rule	Uniqueness
11	ClOrdID	Client Order ID: Unique participant defined order request identifier.	P ⁷	The uniqueness of ClOrdID (11) is checked at entry time among currently live orders for the same instrument and session. Duplicate ClOrdID (11) values for the same session and instrument will be rejected with the exception of Immediate or Cancel (IOC) Orders.	Session Instrument
37	OrderID	Exchange Order ID generated by the T7 System; it remains constant over the lifetime of an order.	E	An exchange order ID is guaranteed to be unique among all orders of the same product.	Product
117	QuoteID	Participant defined (mass) quote identifier.	P	The uniqueness of the (mass) quote identifier is not checked by the T7 system.	
693	Quote-ResponseID	Mass quote response identifier generated by the exchange.	E	Is unique per product.	Product
17	ExecID	Transaction timestamp.	E	Is unique per product.	Product
34	MsgSeqNum	Message sequence number used by the participant for requests sent to the gateway.	P	The MsgSeqNum (34) in the request header must increment with each message sent by the participant to the gateway, starting with the Session Logon message as sequence number 1.	Session
28704	ApplMsgID	Application Message Identifier.	E	Is unique per software release and partition. Any kind of "reset" will be announced via the related release notes.	Partition ApplID
1181	ApplSeqNum	Application Message Sequence Number.	E	Trade, TES Trade, TES Maintenance, SRQS Maintenance: unique per business day, partition and business unit. Starts every business day with 1. Please note: in rare cases sequence numbers might be sent twice.	Partition Business Unit ApplID
				News: unique per market and business day. Starts every day with 1.	Market ApplID
				Risk Control: unique per business unit and business day. Starts every day with 1.	Business Unit ApplID
0	TrdMatchID FillMatchID QuoteEventMatchID	Unique identifier for each price level (match step) of a match event; it is used for public trade reporting.	E	Is unique for the product and business day.	Business Day Product
1363 1893 1506 28711	FillExecID LegExecID SideTradeID QuoteEventExecID	Private identifier of an order match step event, which can be reconciled with the field SideTradeID (1506) in the Trade Notification.	E	Is unique for the product and business day.	Business Day Product

Enhanced Trading Interface (ETI)

Manual – Version 2

18. Mar. 2026

ETI Version 14.1

Page 75 of 77

Tag	Field Name	Description	Source	Rule	Uniqueness
0	TradeID OrigTradeID	The TradeID (1003) field in the Trade Notification in T7 ETI uniquely identifies all order leg allocations referring to the same matching event, simple instrument and price. The TradeID (1003) is equivalent to the trade identifier in Eurex Clearing.	E	Is unique per product and business day.	Business Day Product
1005	SideTradeReportID	Private unique identifier for each side of a trade (with or without a central counter party).	E	Is unique per product and business day.	Business Day, Product
467	IndividualAllocID	TES trade side ID	E	Is unique per product and business day.	Business Day Product
70	AllocID				
2489	PackageID	TES trade ID	E	Is unique per product and business day.	Business Day Product
28758	QuoteNegotiationID	SRQS NegotiationID	E	Is unique per market and business day	Business Day Market
117	QuoteID	SRQS Quote ID	E	Is unique per market and business day	Business Day Market
37	OrderID				
1003	TraderID	SRQS Deal ID	E	Is unique per market and business day	Business Day Market
30017	TESExecID	Transaction ID	E	Is unique per product and business day.	Business Day Product
117	QuoteID	QRS Quote ID	P	QRS workflow ⁸ identifier. Will be checked by T7 core at entry.	Business Unit Instrument

7.3 Quote Entry Status

The following table list the scenarios for the valid values of QuoteEntryStatus (1167):

Scenario	Quote in Book	QuoteEntryStatus (1167)	CxlSize provided
Incoming Quote with error	no	5 = Rejected	no
Incoming Quote with error	yes	6 = Removed quote in book and Rejected	yes
Incoming Quote during Freeze		10 = Pending	no
Incoming Quote during Freeze (already pending)		5 = Rejected	no
Modify/Delete Quote	no	0 = Accepted with warning	0
Modify Quote (Qty <= executed Qty)	yes	0 = Accepted with warning	0

⁸ Please refer to the Cash Message Reference document for more details regarding the QRS workflow.

T7 Release 14.1

Version 2

Enhanced Trading Interface (ETI)

Manual – Version 2

18. Mar. 2026

ETI Version 14.1

Page 76 of 77

Scenario	Quote in Book	QuoteEntryStatus (1167)	CxlSize provided
Incoming Quote side would lead to Crossing	yes	0 = Accepted with warning	yes (quote side in book cancelled)

8. Change Log

8.1 T7 Release 14.1 – Version 2

- No change

8.2 T7 Release 14.1 – Version 1

- **backward compatibility – see Chapter 3.5**